



SU-MO



SU-CL



SU-VA



SU-CU



SU-AB



SU-CA



CO-AR

CHARACTERISTICS

- Fast fixing systems for profiles and metal structures, without drilling or welding.
- Fast fixing by hammering the clip in models SUCU, SUVA, SUCL and by screwing in model SUMO.
- Wide range of models for all types of profiles.
- High values of mechanic resistance in suspension systems.
- Suitable for a wide range of structural profiles.
- Applications: false ceilings, threaded rod anchoring, pipes fixed by clamps, etc.

BASE MATERIAL



APPLICATION EXAMPLES



1. RANGE

ITEM	PHOTO	CODE	DESCRIPTION	MATERIAL	COATING
1		SUMOP09	Clamp for Steel beam	 Steel	 Zinc-pated ≥ 5µm
		SUMOP11			
		SUMOP13			
		SUMOM06			
		SUMOM08			
		SUMOM10			
2		SUCL02	Suspension clip	 Steel	 Phosphate ≥ 5µm
		SUCL04			
		SUCL10			
		SUCL15			
3		SUVA0602	Rod clip	 Steel	 Phosphate ≥ 5µm
		SUVA0604			
		SUVA0610			
		SUVA0615			
		SUVA0802			
		SUVA0804			
		SUVA0810			
SUVA0815					
4		SUCU0602	Holder clip	 Steel	 Phosphate ≥ 5µm
		SUCU0605			
		SUCU0606			
		SUCU0607			
5		SUAAB0603	Clamp Clip	 Steel	 Phosphate ≥ 5µm
		SUAAB0607			
		SUAAB0614			
6		SUCA0602	Cable clip	 Steel	 Phosphate ≥ 5µm
		SUCA0604			
		SUCA0607			
		SUCA0802			
		SUCA0804			
		SUCA0807			
		SUCA1002			
		SUCA1004			
		SUCA1007			
		SUCA1202			
		SUCA1204			
		SUCA1207			
		SUCA1502			
		SUCA1504			
		SUCA1507			
		SUCA1902			
SUCA1904					
SUCA1907					
SUCA2502					
SUCA2504					
SUCA2507					
7		COAR08060	Articulated Hanger	 Steel	 Zinc-pated ≥ 5µm
		COAR10060			

2. INSTALLATION DATA

2.1 SU-MO

Clamp for Steel beam



Material



Steel

Coating

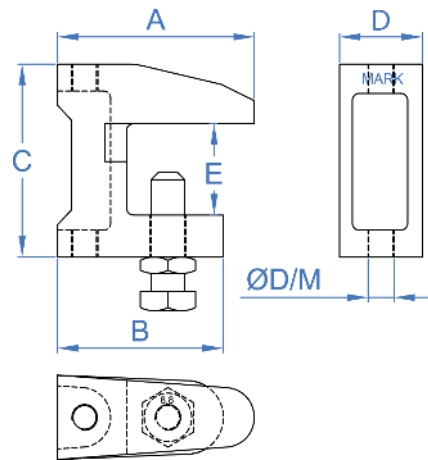


Zinc-plated $\geq 5\mu\text{m}$

Installation data

Code	A	B	C	D	E	\varnothing HOLE	INSTALLATION TYPE	INSTALLATION TORQUE	MAXIMUM RECOMMENDED LOAD
	[mm]	[mm]	[mm]	[mm]	[mm]	[mm]	[--]	[Nm]	[kg]
SUMOP09	38	35	37	18	20	THROUGH HOLE 9	THREADED ROD + NUT OR CABLE	10	120
SUMOP11	44	41	42	21	20	THROUGH HOLE 11		15	250
SUMOP13	57	48	54	24	25	THROUGH HOLE 13		20	350
SUMOM06	38	35	37	18	20	THREADED M6	THREADED ROD + NUT	10	120
SUMOM08	38	35	37	18	20	THREADED M8		10	120
SUMOM10	44	41	42	21	20	THREADED M10		15	250
SUMOM12	57	48	54	24	25	THREADED M12		20	350

Drawing



2.2 SU-CL

Suspension clip



Material



Steel

Coating

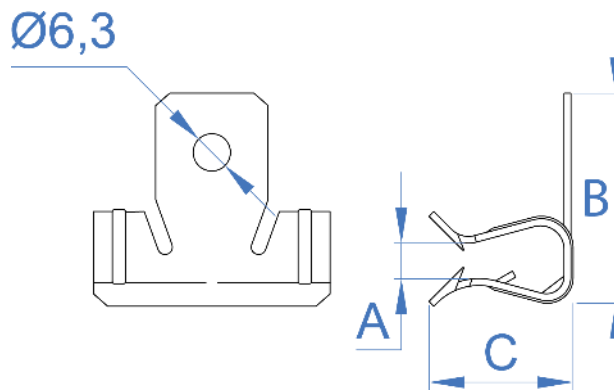


Phosphate $\geq 5\mu\text{m}$

Installation data

Code	A	B	C	\varnothing Hole	MAXIMUM RECOMMENDED LOAD
	[mm]	[mm]	[mm]	[mm]	[kg]
SUCL02	1,5 ÷ 4	28	14	6,3	70
SUCL04	4 ÷ 10	34	23	6,3	70
SUCL10	10 ÷ 15	40	23	6,3	70
SUCL15	15 ÷ 20	40	23	6,3	70

Drawing



2.3 SU-VA

Rod clip



Material



Steel

Coating

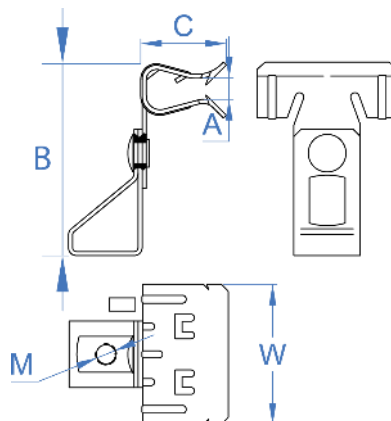


Phosphate $\geq 5\mu\text{m}$

Installation data

Code	A	B	C	W	Size (M)	MAXIMUM RECOMMENDED LOAD
	[mm]	[mm]	[mm]	[mm]	[mm]	[kg]
SUVA0602	1,5 ÷ 4	50	14	28	M 6	70
SUVA0604	4 ÷ 10	54	23	40	M 6	70
SUVA0610	10 ÷ 15	60	23	40	M 6	70
SUVA0615	15 ÷ 20	60	23	40	M 6	70
SUVA0802	1,5 ÷ 4	50	14	28	M 8	70
SUVA0804	4 ÷ 10	54	23	40	M 8	70
SUVA0810	10 ÷ 15	60	23	40	M 8	70
SUVA0815	15 ÷ 20	60	23	40	M 8	70

Drawing



2.4 SU-CL

Holder clip



Steel

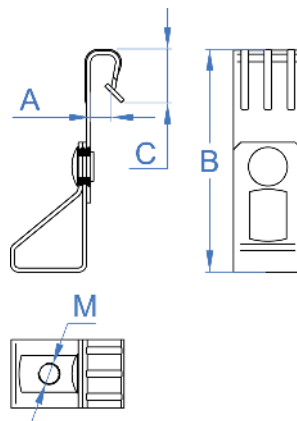


Phosphate $\geq 5\mu\text{m}$

Installation data

Code	A	B	C	Size (M)	MAXIMUM RECOMMENDED LOAD
	[mm]	[mm]	[mm]	[mm]	[kg]
SUCU0602	1,5 ÷ 5	65	15	M 6	70
SUCU0605	5 ÷ 7	65	15	M 6	70
SUCU0606	3 ÷ 7	80	30	M 6	70
SUCU0607	7 ÷ 10	95	30	M 6	70

Drawing



2.5 SU-AB

Clamp clip

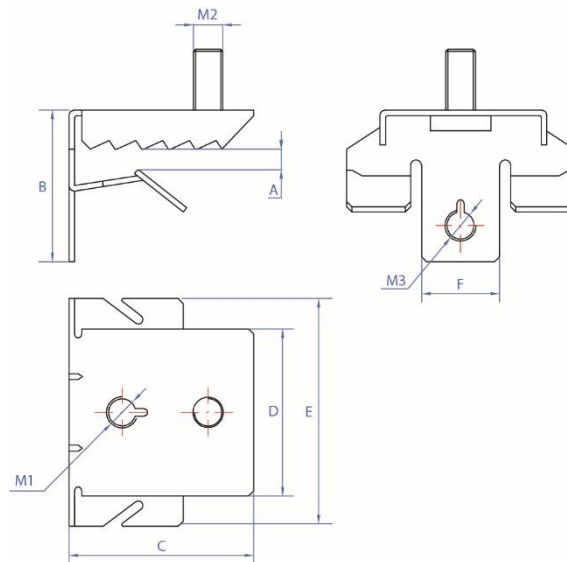


Material	Coating
Steel	Phosphate ≥ 5µm

Installation data

Code	A	B	C	D	E	F	M1	M2	M3	MAXIMUM RECOMMENDED LOAD, L1	MAXIMUM RECOMMENDED LOAD, L2
	[mm]	[mm]	[mm]	[mm]	[mm]	[mm]	[mm]	[mm]	[mm]	[kg]	[kg]
SUAB0603	3 ÷ 7	30	36,5	33	45	15,4	M6	M6x10	M6	50	33
SUAB0607	7 ÷ 13	36	36,5	33	45	15,4	M6	M6x10	M6	50	33
SUAB0614	14 ÷ 20	43	36,5	33	45	15,4	M6	M6x10	M6	50	33

Drawing



2.6 SU-CA

Cable clip



Material

Coating



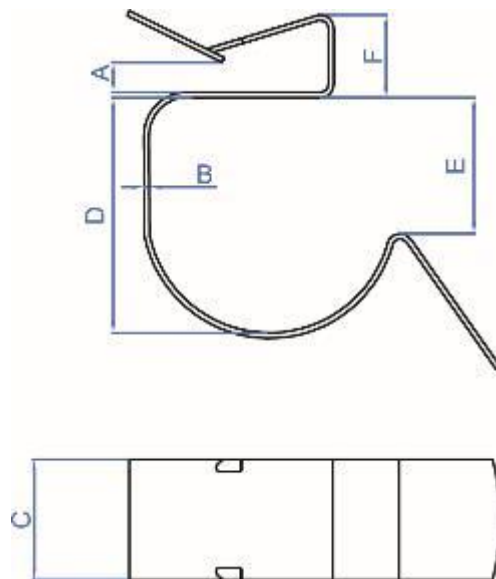
Steel

Phosphate $\geq 5\mu\text{m}$

Installation data

Code	A – Thickness	Tube Diameter	B	C	D	E	F
	[mm]	[mm]					
SUCA0602	1 - 4	6 - 7	0,6	14,0	5,8	3,8	4,8
SUCA0604	4 - 7,5	6 - 7					8,0
SUCA0607	7,2 - 12	6 - 7					12,0
SUCA0802	1 - 4	8 - 9			8,0	5,8	4,8
SUCA0804	4 - 7,5	8 - 9					8,0
SUCA0807	7,2 - 12	8 - 9					12,0
SUCA1002	1 - 4	10 - 11			9,7	6,8	4,8
SUCA1004	4 - 7,5	10 - 11					8,0
SUCA1007	7,2 - 12	10 - 11					12,0
SUCA1202	1 - 4	12 - 14			11,0	7,5	4,8
SUCA1204	4 - 7,5	12 - 14					8,0
SUCA1207	7,2 - 12	12 - 14					12,0
SUCA1502	1 - 4	15 - 18			13,5	9,0	4,8
SUCA1504	4 - 7,5	15 - 18					8,0
SUCA1507	7,2 - 12	15 - 18					12,0
SUCA1902	1 - 4	19 - 24			18,5	11,5	4,8
SUCA1904	4 - 7,5	19 - 24					8,0
SUCA1907	7,2 - 12	19 - 24					12,0
SUCA2502	1 - 4	25 - 30			24,6	19,5	4,8
SUCA2504	4 - 7,5	25 - 30					8,0
SUCA2507	7,2 - 12	25 - 30	12,0				

Plan



2.7 CO-AR

Articulated Hanger



Material

Coating



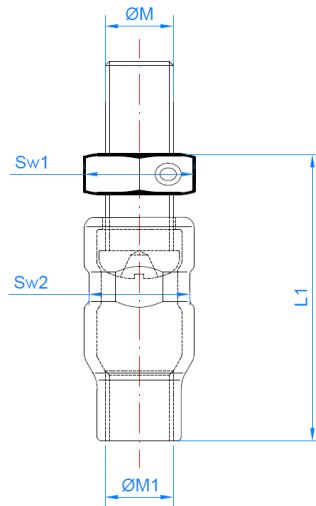
Steel

Zinc-plated $\geq 5\mu\text{m}$

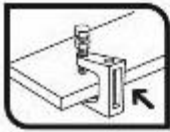
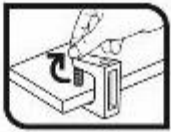
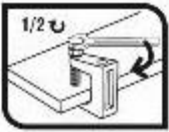
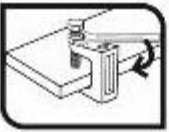
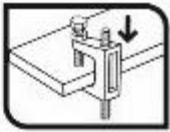
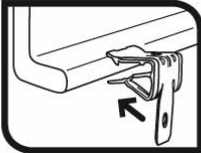
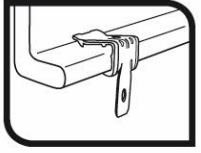
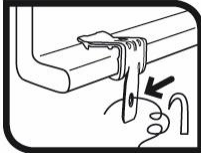
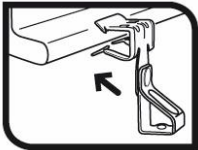
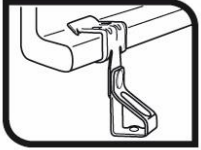
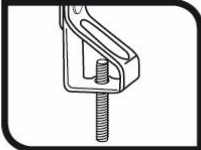
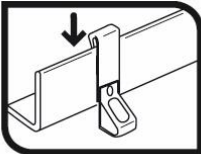
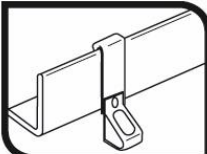
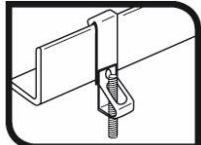
Installation data

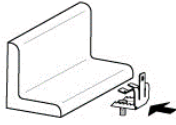
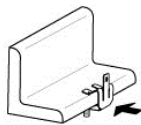
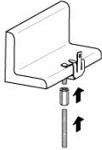

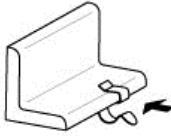
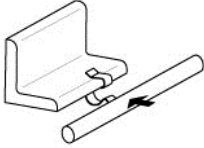
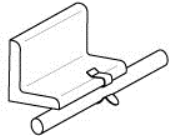
Code	$\varnothing M$ (mm)	$\varnothing M1$ (mm)	L1	Sw	Sw2	MAXIMUM RECOMMENDED LOAD [kg]
COAR08060	M8	M8	60	12,8 – 12,9	14,8 -14,9	120
COAR10060	M10	M10	61	16,8 – 16,9	16,8 – 16,9	150

DRAWING



3. INSTALLATION PROCEDURE

CODE	STEP 1	STEP 2	STEP 3	STEP 4	STEP 5
SU-MO					
	Step 1: Place the clip on the profile.				
	Step 2: Screw the clamp's bolt manually.				
	Step 3: With the help of a wrench tighten the bolt 1/2 turn.				
	Step 4: Screw the locknut manually and tighten with a wrench 1/8 turn.				
Step 5: Add the element to be suspended from the clamp.					
CODE	STEP 1	STEP 2	STEP 3		
SU-CL					
	Step 1: Place the clip on the profile.				
	Step 2: Hammer the clip until it is totally installed.				
Step 3: Add the element to be suspended from the clip.					
CODE	STEP 1	STEP 2	STEP 3		
SU-VA					
	Step 1: Place the clip on the profile.				
	Step 2: Hammer the clip until it is totally installed.				
Step 3: Add the element to be suspended from the clip.					
CODIGO	STEP 1	STEP 2	STEP 3		
SU-CU					
	Step 1: Place the clip on the profile.				
	Step 2: Hammer the clip until it is totally installed.				
Step 3: Add the element to be suspended from the clip.					

CODE	STEP 1	STEP 2	STEP 3	
SU-AB				
	Step 1: Place the clip on the profile.			
	Step 2: Hammer the clip until it is totally installed.			
	Step 3: Add the element to be suspended from the clip.			
CODE	STEP 1	STEP 2	STEP 3	STEP 4
SU-CA				
	Step 1: Place the clip on the profile.			
	Step 2: Hammer the clip until it is totally installed.			
	Step 3: Press the clip to fix the tube			
	Step 4: Add the element to be suspended from the clip.			