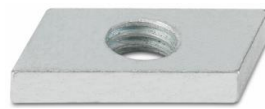




TO-GU



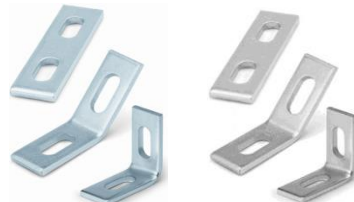
TU-GU



TU-GR



TO-GR



EG-Z / EG-A2



PG-Z / PG-A2



PU-Z



SO-TP



SO-PG

### CHARACTERISTICS

- Different accessories for support guides that offer a wide variety of installation methods.
- Compatible with the clamp range from the catalogue, both for piping and electrical needs.
- Ideal for specialized installers in this field.
- In a variety of materials:
  - Galvanized: for supporting electrical installations or simple indoor/outdoor fluid installations with moderate corrosion.
  - Stainless steel: For outdoor use or in humid or pollutant (chlorine-free) industrial environments.
  - PVC: for light loads. Easy installation (may be cut without tools) and good resistance to chemical agents in general.

### BASE MATERIAL



APPLICATION EXAMPLES



Channels and cantilevers for electrical and telecommunication installations and piping.

Cable tray supports.

Accessories which complement basic equipment.

# 1. GAMA

ITEM	PHOTO	REFERENCE	DESCRIPTION	MATERIAL	COATING
1		TG230620	Channel stud nut		
		TG230820			
		TG230830			
		TG340830			
		TG41030			
2		TUG201006	Channel nut		
		TUG201008			
		TUG271808			
		TUG271810			
3		TUGRA2706	Fast nut-guide with washer		
		TUGRA2708			
		TUGRA3808			
		TUGRA3810			
4		TGR230620	Fast-fixing stop screw		
		TGR230820			
		TGR230830			
		TGR340830			
		TGR341030			
5		EMZ45	Zinc-plated and stainless steel brackets		
		EMZ90			
		EMZ00			
		EMI45			
		EMI90			
		EMI00			
6		PGZ2718	Zinc-plated and stainless steel U-fitting		
		PGZ2830			
		PGZ3840			
		PGI2718			
		PGI2830			
		PGI3840			
7		PUZ2718	Union plates for profiles		
		PUZ3840			
8		SOTP2718	Plastic cap for framing systems		--
		SOTP2830			
		SOTP3840			
		SOTP4121			
		SOTP4141			
9		SOPG27	Isophonic rubber profile (20 m)		--
		SOPG38			
		SOPG41			



### 3. INSTALLATION DATA

#### 3.1 TO-GU

#### Channel stud nut

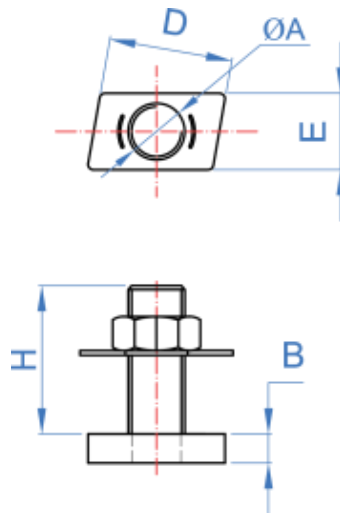


Material	Coating	Valid for
Steel	Zinc-plated	Slotted channel GP-G

#### Installation data

Code	ØA	B	D	E	H	Valid for
TG230620	M6	4	23	13	20	20/10 - 25/08 - 25/11 - 27/18
TG230820	M8	5	23	15	20	27/18 – 28/30
TG230830	M8	5	23	15	30	27/18 – 28/30
TG340830	M8	5	33	15	30	38/40 – 40/20
TG341030	M10	5	33	15	30	38/40 – 40/20

#### Drawing



#### Maximum recommended sliding and tension loads

Code	Channel	Installation torque [Nm]	Sliding load [kN]	Tension load [kN]
TG230620	GPG271812	8.1	0.51	0.43
TG230830	GPG271812	10.0	0.75	1.83
TG230620	GPG283018	8.1	0.40	0.55
TG230830	GPG283018	10.0	0.52	2.77
TG340830	GPG384020	10.0	0.82	3.52
TG341030	GPG384020	10.0	0.84	3.08
TG340830	GPG402015	10.0	0.81	2.45
TG341030	GPG402015	10.0	0.92	1.64
TG230620	GPZ250808	8.1	0.96	0.49
TG230830	GPZ250808	10.0	1.05	0.67

### 3.2 TU-GU

#### Channel nut

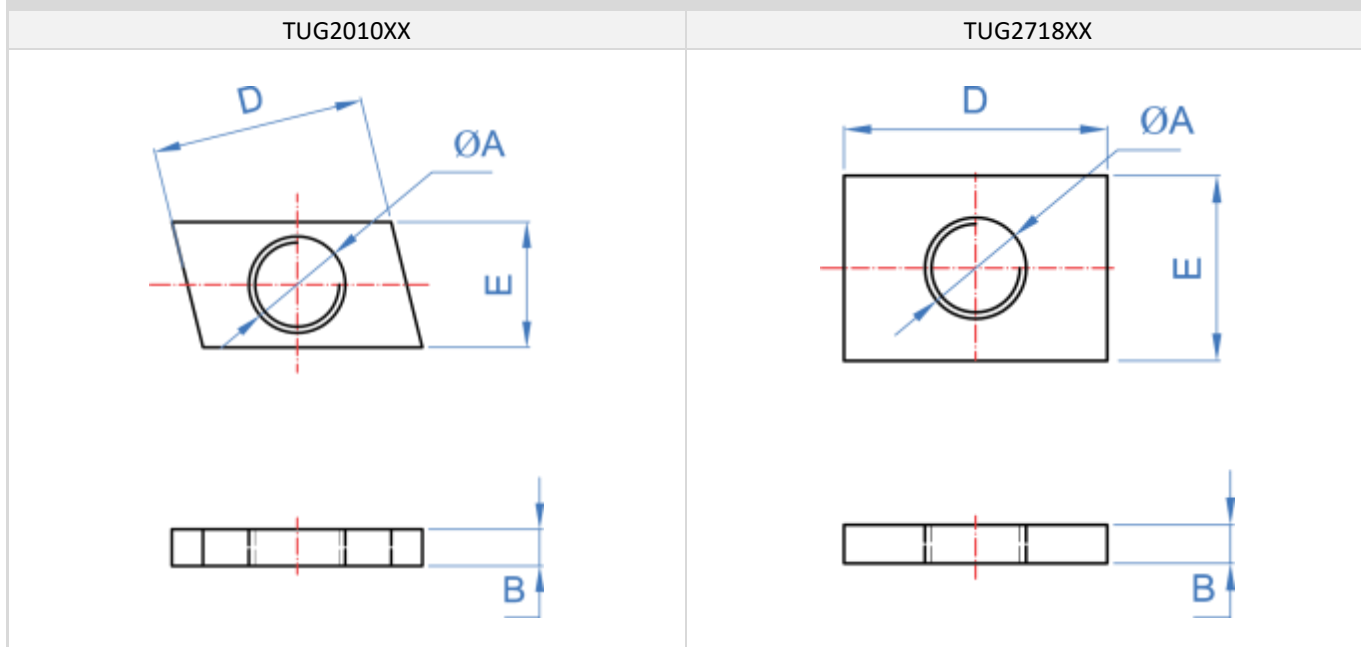


Material	Coating	Valid for
Steel	Zinc-plated	Slotted channel GP-G

#### Installation data

Code	ØA	B	D	E	Valid for
TUG201006	M6	4	23	13	20/10 - 25/08 - 25/11 - 27/18 - 28/30
TUG201008	M8	4	23	13	20/10 - 25/08 - 25/11 - 27/18 - 28/30
TUG271808	M8	4	30	24	27/18 - 28/30 - 38/40 - 40/20
TUG271810	M10	4	30	24	27/18 - 28/30 - 38/40 - 40/20

#### Drawing



#### Maximum recommended sliding and tension loads

Code	Channel	Installation torque [Nm]	Sliding load [kN]	Tension load [kN]
TUG271808	GPI283015	14.9	0.69	5.33
TUG271808	GPI384020	14.9	0.74	5.84
TUG271810	GPI283015	25.8	0.66	5.84
TUG271810	GPI384020	25.8	1.20	6.19

### 3.3 TU-GRA

#### Indextrut fast nut-guide with washer

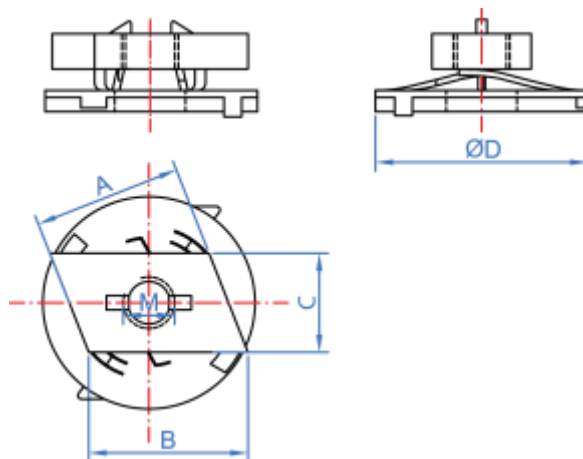


Material	Coating	Valid for
<b>A</b>	<b>Z</b> ZINC	
Steel	Zinc-plated	Slotted channel GP-G

#### Installation data

Code	A	B	C	ØD	M	Valid for
TUGRA2706	23,5	26	14	31	M6	20/10 - 25/08 - 25/11 - 27/18 - 28/30
TUGRA2708	23,5	26	14	31	M8	20/10 - 25/08 - 25/11 - 27/18 - 28/30
TUGRA3808	33	36	16	41	M8	27/18 - 28/30 - 38/40 - 40/20
TUGRA3810	33	36	16	41	M10	27/18 - 28/30 - 38/40 - 40/20

#### Drawing



### 3.4 TO-GR

#### Indextrut fast-fixing stop screw

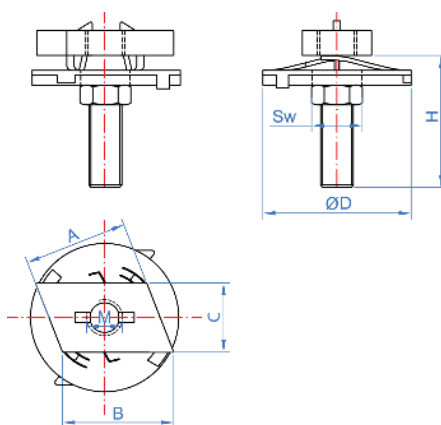


Material	Coating	Valid for
<b>A</b>	<b>Z</b> ZINC	
Steel	Zinc-plated	Slotted channel GP-G

#### Installation data

Code	A	B	C	ØD	H	M	SW	Valid for
TGR230620	23,5	26	14	31	23	M6	10	20/10 - 25/08 - 25/11 - 27/18 - 28/30
TGR230820	23,5	26	14	31	23	M8	13	20/10 - 25/08 - 25/11 - 27/18 - 28/30
TGR230830	23,5	26	14	31	33	M8	13	20/10 - 25/08 - 25/11 - 27/18 - 28/30
TGR340830	33	36	16	41	33	M8	13	27/18 - 28/30 - 38/40 - 40/20
TGR341030	33	36	16	41	33	M10	17	27/18 - 28/30 - 38/40 - 40/20

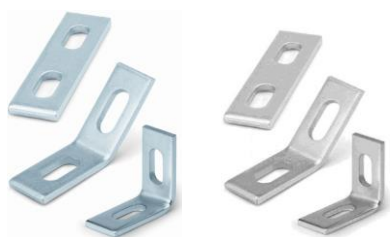
#### Drawing





### 3.5 EG-Z / EG-A2

### Zinc-plated / stainless steel brackets



Material		Coating		Valid for	
			--		
Steel	Stainless Steel A2	Zinc-plated	--	Slotted channel GP-G	Slotted channel GP-A2

#### Installation data

Code	Code	Size	N° of holes
EMZ45	EMI45	45°	2
EMZ90	EMI90	90°	2
EMZ00	EMI00	180°	2

#### Drawing

#### Maximum recommended Load\* [kg]

EMZ45 / EMI45		540
EMZ90 / EMI90		540
EMZ00 / EMI00		540

\*Resistances for loads applied on structures without cantilever.

**3.6 PG-Z / PG-A2**

**Zinc-plated / stainless steel U-fitting**



Material		Coating		Valid for	
			--		
Steel	Stainless Steel A2	Zinc-plated	--	Slotted channel GP-G	Slotted channel GP-A2

**Installation data**

Code	Code	Valid for
PGZ2718	PGI2718	27/18
PGZ2830	PGI2830	28/30
PGZ3840	PGI3840	38/40

**Drawing**

PGZ2718 / PGI2718	PGZ2830 / PGI2830	PGZ3840 / PGI3840

**3.7 PU-Z**

**Union plate for profiles**

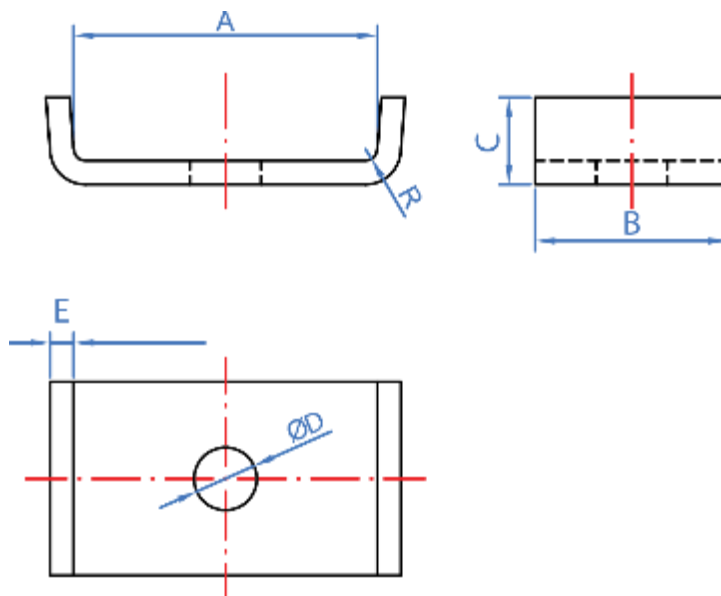


Material	Coating	Valid for
		
Steel	Zinc-plated	Guia perforada GP-G

**Installation data**

Code	A	B	C	∅D	R
PUZ2718	27,5	25	10,5	9	2
PUZ3840	38,5	25	10,5	9	2,5

**Drawing**



**3.8 SO-TP**

**Plastic cap for framing systems**



**Material**



Polypropylene

**Valid for**

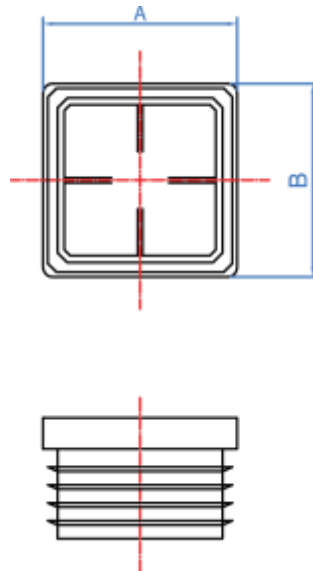


Slotted channel GP-G / GP-X

**Installation data**

Code	A	B
SOTP2718	30	20
SOTP2830	30	30
SOTP3840	40	40
SOTP4121	41	21
SOTP4121	41	41



**Drawing**



**3.9 SO-PG**

**Isophonic rubber profile**



Material	Valid for
	
EPDM Rubber (20 m)	Slotted channel GP-G / GP-X

**Installation data**

Code	A	B	C	D
SOPG27	28	15,5	6	16
SOPG38	39	17,5	8	19,5
SOPG41	41	25,5	8	19

**Drawing**

