

KC-PSD



ASSESSMENTS

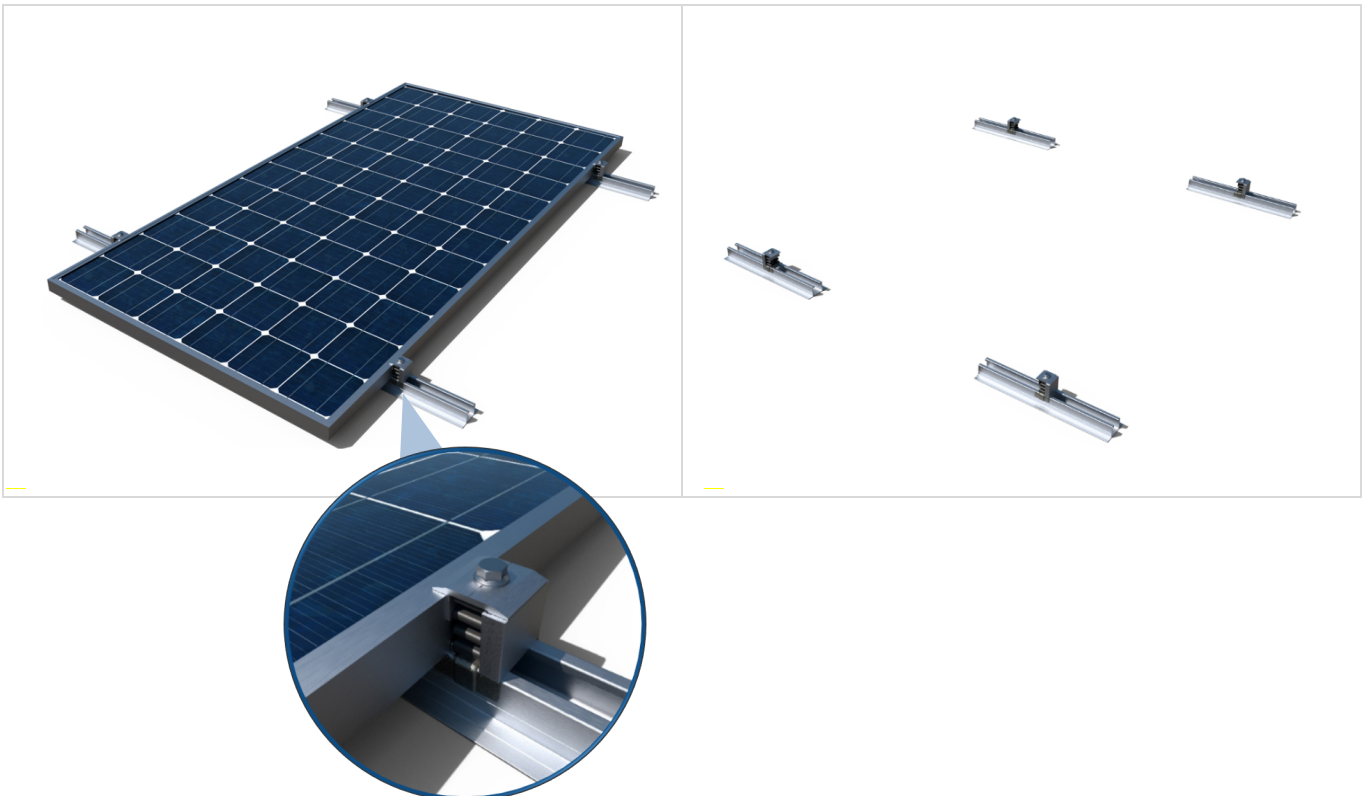


PRODUCT DESCRIPTION

Coplanar assembly kit with winged aluminium profile (**PSA-A**). Direct fixing. Discontinuous profile format.

CHARACTERISTICS

- Assembly kit containing the components necessary for the installation of a determined number of solar panels.
- Installation based on **SC-PSD** coplanar mounting system.
- Includes quick fixing clamps **KFRSC3050** for panels.
- Includes **GM-A** gauges for heights of 30 ,35 and 40 mm.
- Includes **PSA-A** aluminium profile structure in discontinuous format.



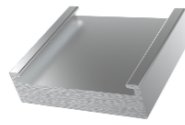
COMPONENTS

Quick pre-assembled clamp



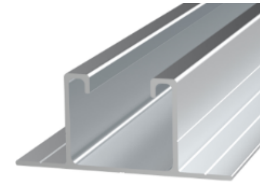
KFR-SC

Aluminium gauge for solar frame



GM-A

Winged aluminium profile



PSA-A

APPLICATIONS

- Assembly of solar panels in parallel with respect to the roof surface on sloping roofs.
- Installation on metal roofs on the upper face of the ribs, for a gap between ribs ≤ 360 mm.
- For panels with 30, 35 or 40 mm-high frames.
- Adaptable to the measurements of standard photovoltaic modules.
- Portrait view (vertical) orientation panel assembly with profiles mounted perpendicular to the slope line.
- Direct fixing kit for roof mounting. Consult specifications in the **SC-PSD** mounting system technical data sheet.



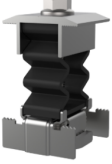
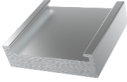
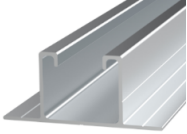
1.RANGE

ITEM	CODE	PHOTO	DESCRIPTION	PANELS	FRAME	LENGTH	MATERIAL		
1	KCPSD0130		Coplanar kit with winged aluminium profile (PSA-A). Direct fixing. Discontinuous profile format. For one panel	1	30 mm	400 mm			
	KCPSD0135			1	35 mm	400 mm			
	KCPSD0140			1	40 mm	400 mm			
2	KCPSD01AM		Coplanar kit with winged aluminium profile (PSA-A). Direct fixing. Discontinuous profile format. For one extra panel	+1	30-40mm	400 mm			

2.INSTALLATION DATA

2.1 KCPD01

Coplanar kit with winged aluminium profile (PSA-A). Direct fixing.
Interrupted profile format. For one panel.

  1 panel Reference	Component Kit		
	 Quick pre-assembled clamp	 Aluminium gauge for solar frame	 Winged aluminium profile
KCPD0130 (H=30mm)	KFRSC3050 4 units	GMA030 4 units	PSAA0400 4 units
KCPD0135 (H=35mm)	KFRSC3050 4 units	GMA035 4 units	PSAA0400 4 units
KCPD0140 (H=40mm)	KFRSC3050 4 units	GMA040 4 units	PSAA0400 4 units

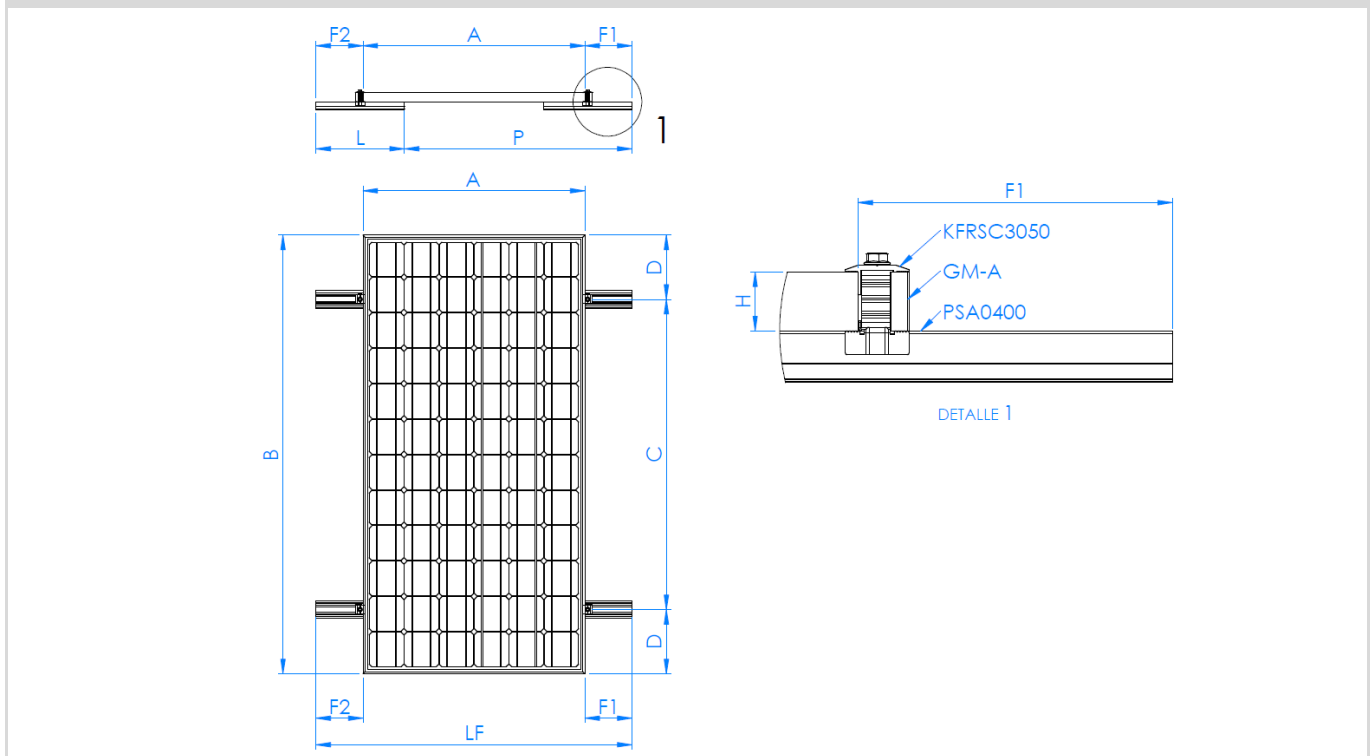
Roof/Fixing accessories

Consult technical data sheet corresponding to the SC-PSD assembly system.

Measurement table


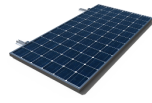

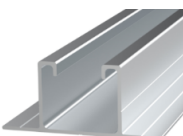

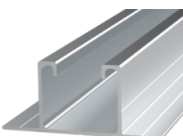
Code	A (mm)	B (mm)	C (mm)	D (mm)	F1 (mm)	F2 (mm)	H (mm)	L (mm)	LF (mm)	P (mm)
KCPD0130	≤ 1200	≤ 2300	0,5B ÷ 0,7B	(B-C) / 2	35 ÷ 391	35 ÷ 391	30	400	L+P	(A-330) ÷ (A+330)
KCPD0135	≤ 1200	≤ 2300	0,5B ÷ 0,7B	(B-C) / 2	35 ÷ 391	35 ÷ 391	35	400	L+P	(A-330) ÷ (A+330)
KCPD0140	≤ 1200	≤ 2300	0,5B ÷ 0,7B	(B-C) / 2	35 ÷ 391	35 ÷ 391	40	400	L+P	(A-330) ÷ (A+330)

Drawing



2.2 KCPSD01AM

**Coplanar kit with winged aluminium profile (PSA-A). Direct fixing.
Discontinuous profile format. For one extra panel.**

	 <p>+1 panel</p>	 <p>Quick pre-assembled clamp</p>	Component Kit		
			 <p>Winged aluminium profile</p>	 <p>KFRSC3050 2 units</p>	 <p>PSAA0400 2 units</p>
<p>Reference</p> <p>KCPSD01AM</p>					

Roof/Fixing accessories

Consultar ficha técnica correspondiente al sistema de montaje SC-PSD.

Measurement table

Code	A (mm)	B (mm)	C (mm)	D (mm)	E (mm)	F (mm)	H (mm)	L (mm)
KCPSD01AM	≤ 1200	≤ 2300	0,5B ÷ 0,7B	(B-C) / 2	26	35 ÷ 391	40	400

Drawing

