

KC-PSC



ASSESSMENTS

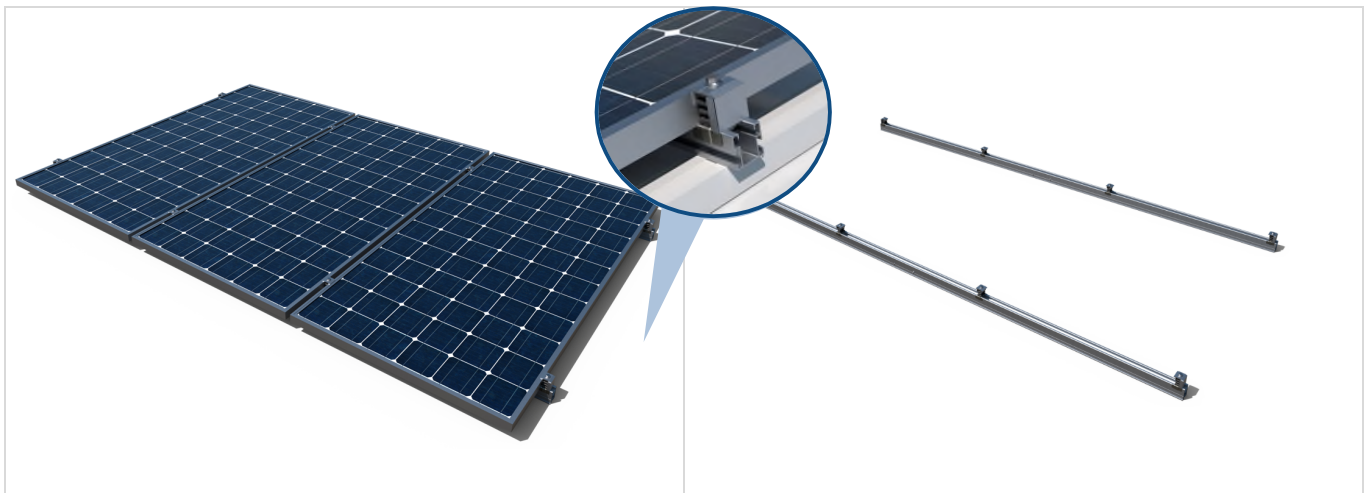


PRODUCT DESCRIPTION

Coplanar kit with aluminium profile (**PSE-C**). Assembled fixing

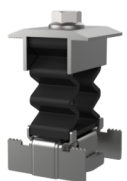
CHARACTERISTICS

- Assembly kit containing the components necessary for the installation of a determined number of solar panels.
- Installation based on **SC-PSC** coplanar mounting system.
- Includes quick fixing clamps **KFRSC3050** for panels.
- Includes GM-A frame gauges, available in 30, 35 or 40mm height.
- Includes **PSE-C** aluminium profile structure in continuous format.
- Includes **PSECUN200** profile joint with **DIN-7504-K A2** installation screw set.



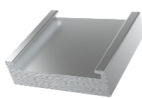
COMPONENTS

Quick preassembled clamp



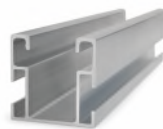
KFR-SC

Aluminium gauge for solar frame



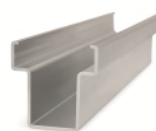
GM-A

Aluminium profile for assembled fixing



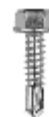
PSE-C

Connector for PSE-C



PSE-CUN

A2 DIN-7504-K bolt



ABE-I

PSE-C bottom connector kit



KFS-FI

APPLICATIONS

- Assembly of solar panels in parallel with respect to the roof surface on sloping roofs.
- Installation on all roof types, mounted on adjustable fixing accessories
- For panels with a frame of 30 mm, 35 mm or 40 mm in height.
- For plate sizes up to 1150 mm wide
- Landscape view (vertical) and portrait view (vertical) orientation panel assembly.
- Wide range of adjustable fixing accessories to choose from depending on the roof and sub-structure characteristics.

1.RANGE

ITEM	CODE	PHOTO	DESCRIPTION	PANELS	FRAME	LENGTH ROW	MATERIAL		
1	KCPSC0230		Coplanar kit with aluminium profile (PSE-C). Assembled fixing For 2 panels	2	30 mm	2500 mm			
	KCPSC0235			2	35 mm	2500 mm			
	KCPSC0240			2	40 mm	2500 mm			
2	KCPSC0330		Coplanar kit with aluminium profile (PSE-C). Assembled fixing For 3 panels	3	30 mm	3750 mm			
	KCPSC0335			3	35 mm	3750 mm			
	KCPSC0340			3	40 mm	3750 mm			
3	KCPSC02AM		Coplanar kit with Aluminum profile (PSE-C). Assembled fixing. For enlargement 2 panels	2	---	2500 mm			
	KCPSC03AM			3	---	3750 mm			

2.INSTALLATION DATA

2.1 KCPSC02

Coplanar kit with aluminium profile (PSE-C). Assembled fixing
For two panels

	Component Kit					
	<p>Quick pre-assembled clamp</p>	<p>Aluminium gauge for solar frame</p>	<p>Aluminium profile for assembled fixing</p>	<p>Connector for PSE-C</p>	<p>A2 DIN-7504-K bolt</p>	
	2 panels					
	Reference					
KCPSC0230 (H=30mm)	KFRSC3050 6 units	GMA030 4 units	PSEC411250 4 units	PSECUN200 2 units	ABE15519 8 units	
KCPSC0235 (H=35mm)	KFRSC3050 6 units	GMA035 4 units	PSEC411250 4 units	PSECUN200 2 units	ABE15519 8 units	
KCPSC0240 (H=40mm)	KFRSC3050 6 units	GMA040 4 units	PSEC411250 4 units	PSECUN200 2 units	ABE15519 8 units	

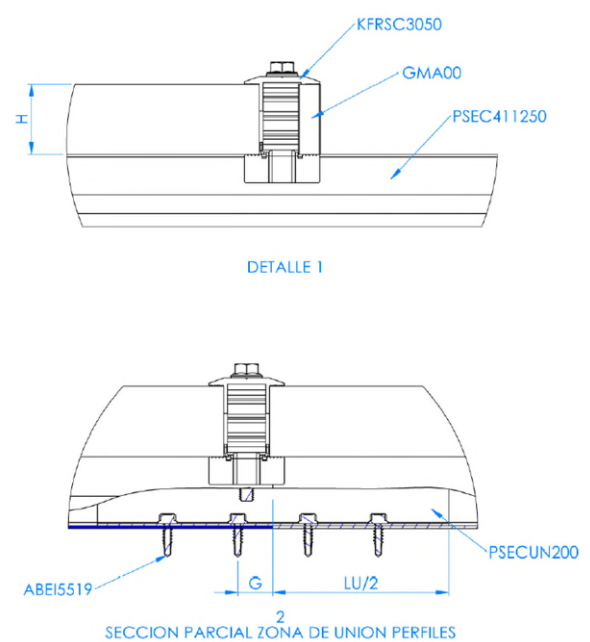
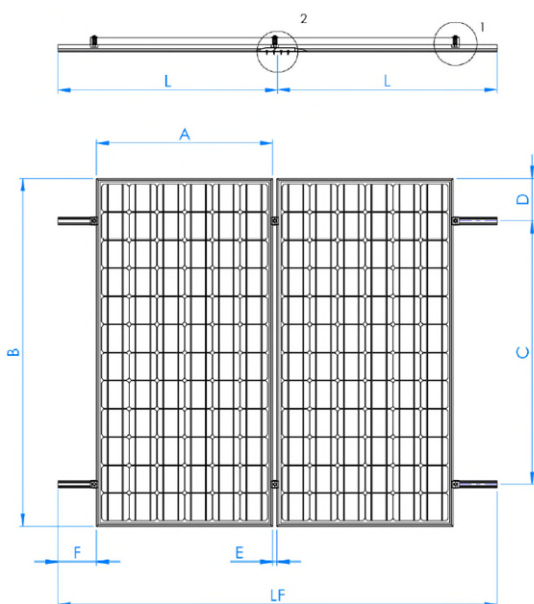
Roof/Fixing accessories

Consult technical data sheet corresponding to the SC-PSC assembly system.

Measurement table

Code	A (mm)	B (mm)	C (mm)	D (mm)	E (mm)	F (mm)	G (mm)	H (mm)	L (mm)	LF (mm)	LU/2 (mm)
KCPSC0230	≤ 1150	≤ 2300	0,5B ÷ 0,7B	(B-C) / 2	26	≥ 35	20÷40	30	1250	2500	100
KCPSC0235	≤ 1150	≤ 2300	0,5B ÷ 0,7B	(B-C) / 2	26	≥ 35	20÷40	35	1250	2500	100
KCPSC0240	≤ 1150	≤ 2300	0,5B ÷ 0,7B	(B-C) / 2	26	≥ 35	20÷40	40	1250	2500	100

Drawing



2.2 KCPSC03

Coplanar kit with aluminium profile (PSE-C). Assembled fixing For three panels

	Component Kit					
	<p>Quick pre-assembled clamp</p>	<p>Aluminium gauge for solar frame</p>	<p>Aluminium profile for assembled fixing</p>	<p>Connector for PSE-C</p>	<p>A2 DIN-7504-K bolt</p>	
	Reference					
	KCPSC0330 (H=30mm)	KFRSC3050 8 units	GMA030 4 units	PSEC411875 4 units	PSECUN200 2 units	ABEI5519 8 units
KCPSC0335 (H=35mm)	KFRSC3050 8 units	GMA035 4 units	PSEC411875 4 units	PSECUN200 2 units	ABEI5519 8 units	
KCPSC0340 (H=40mm)	KFRSC3050 8 units	GMA040 4 units	PSEC411875 4 units	PSECUN200 2 units	ABEI5519 8 units	

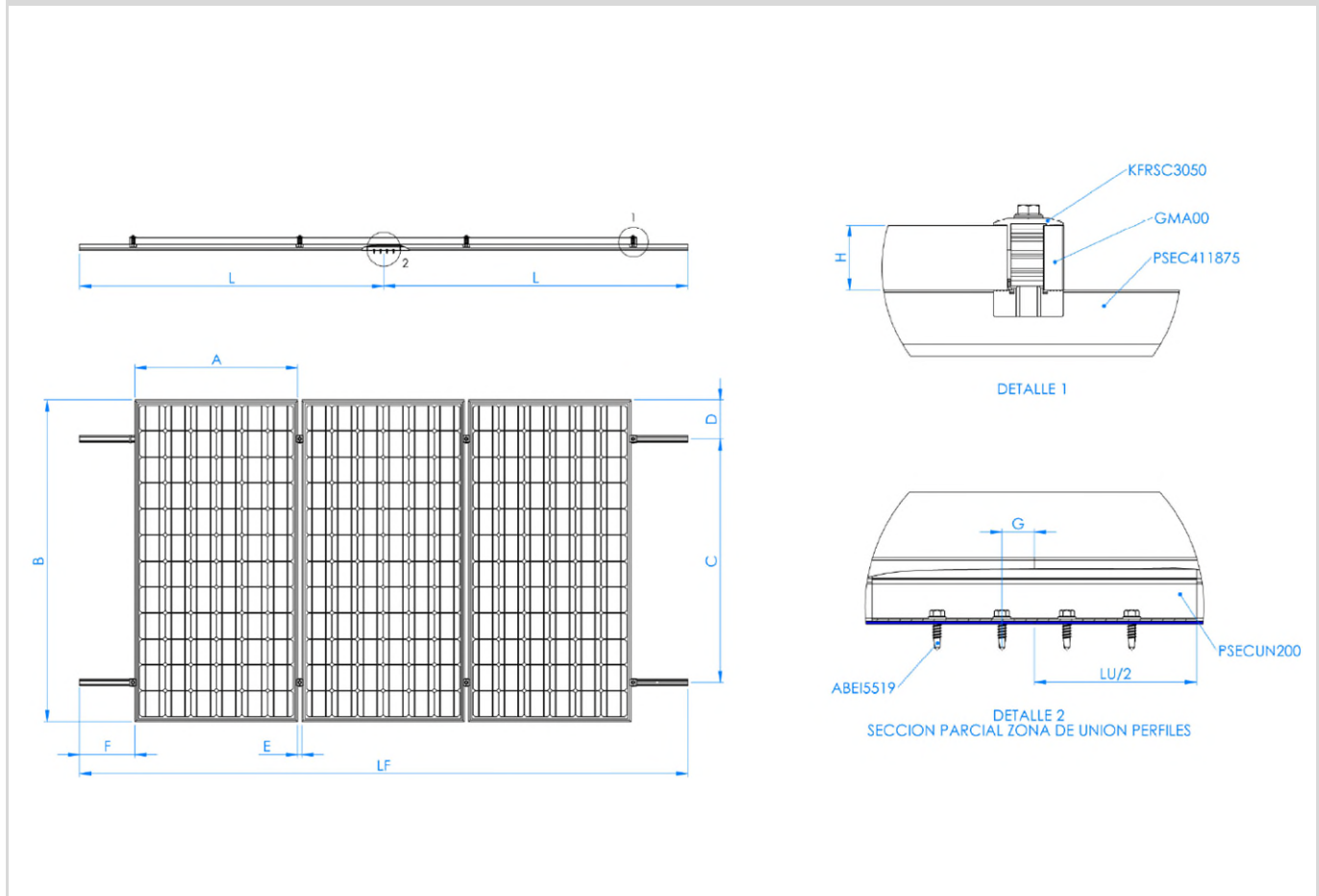
Roof/Fixing accessories

Consult technical data sheet corresponding to the SC-PSC assembly system.

Measurement table

Code	A (mm)	B (mm)	C (mm)	D (mm)	E (mm)	F (mm)	G (mm)	H (mm)	L (mm)	LF (mm)	LU/2 (mm)
KCPSC0330	≤ 1150	≤ 2300	0,5B ÷ 0,7B	(B-C) / 2	26	≥ 35	20÷40	30	1875	3750	100
KCPSC0335	≤ 1150	≤ 2300	0,5B ÷ 0,7B	(B-C) / 2	26	≥ 35	20÷40	35	1875	3750	100
KCPSC0340	≤ 1150	≤ 2300	0,5B ÷ 0,7B	(B-C) / 2	26	≥ 35	20÷40	40	1875	3750	100

Drawing



2.3 KCPSCAM

Coplanar kit with aluminum profile (PSE-C). Assembled fixing. Enlargement for 2 and 3 panels

	<p>2 & 3 panels</p>	Component Kit				
		<p>Quick pre-assembled clamp</p>	<p>Aluminum profile for assembled fixing</p>	<p>Connector for PSE-C</p>	<p>A2 DIN-7504-K bolt</p>	
		Reference				
		KCPSC02AM	KFRSC3050 4 units	PSEC411250 4 units	PSECUN200 4 units	ABEI5519 16 units
KCPSC03AM	KFRSC3050 6 units	PSEC411875 4 units	PSECUN200 4 units	ABEI5519 16 units		

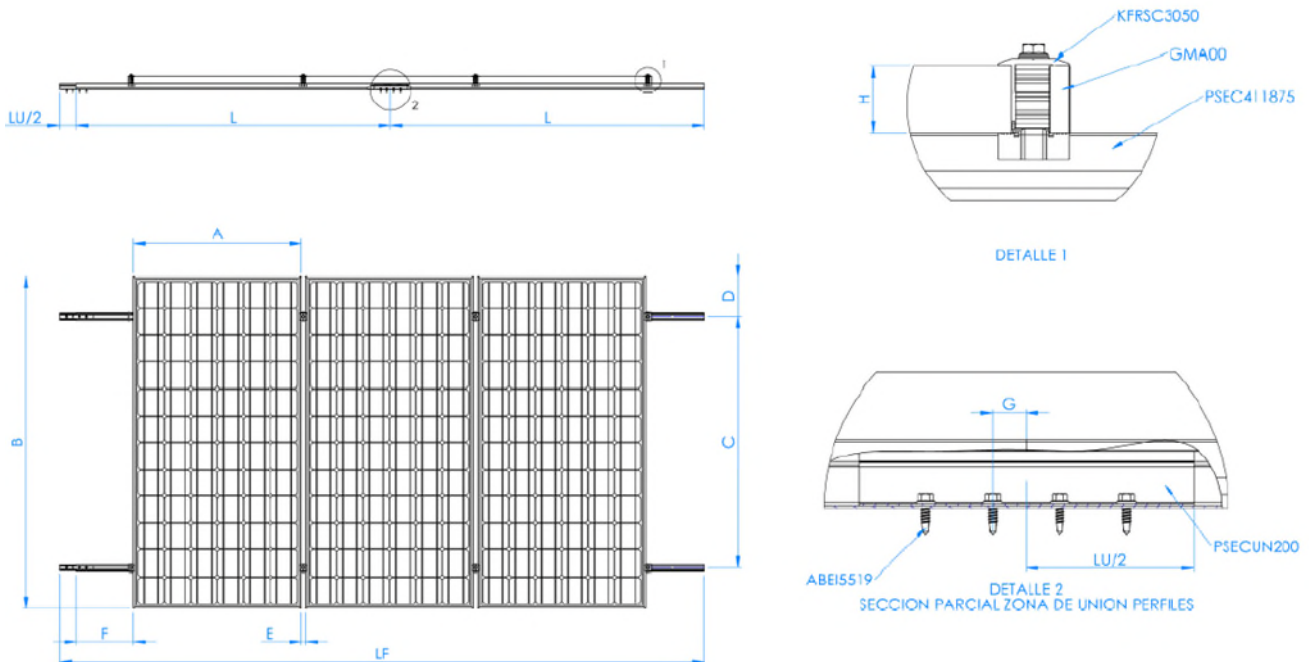
Roof/Fixing accessories

Consult technical data sheet corresponding to the SC-PSC assembly system.

Measurement table

Code	A (mm)	B (mm)	C (mm)	D (mm)	E (mm)	F (mm)	G (mm)	J (mm)	LU/2 (mm)	L (mm)	LF (mm)
KCPSC02AM	≤ 1150	≤ 2300	0,5B ÷ 0,7B	(B-C) / 2	26	≥ 35	20÷40	20 ÷ 220	100	1250	2500
KCPSC03AM	≤ 1150	≤ 2300	0,5B ÷ 0,7B	(B-C) / 2	26	≥ 35	20÷40	20 ÷ 220	100	1875	3750

Drawing



Example of enlargement kit composition 3 panels