

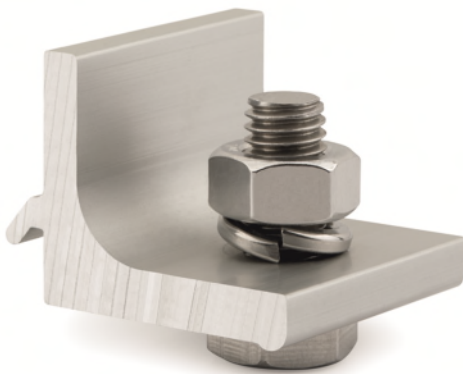
## KFS-FC

### PRODUCT DESCRIPTION

- Cross connector for lateral fixing.

### CHARACTERISTICS

- Pre-assembled kit for lateral fixing of PSE-C profile.
- Includes one profile in 6005-T6 anodised extruded aluminium alloy.
- Includes one DIN-933 bolt, one DIN-127 (M8) washer and one DIN-934 (M8) nut in A2-70 stainless steel.
- For outside use.
- Attachment to the side of PSE-C profiles without interfering with any operations.
- 30 mm-long with a vertical 26.5 mm-wing, designed for a pre-stressed joint that is resistant to torsion on the profile.
- Quick, accessible fixing with a single bolt.
- Facilitates pre-assembly and the adjustment of profiles thanks to its elastic washer.
- Allows dismantling without damaging structural elements, maximum tightening torque: 14 Nm.
- Guide groove on the vertical wing that allows attachment drill holes to be made in the longitudinal joint areas between profiles.



### APPLICATIONS

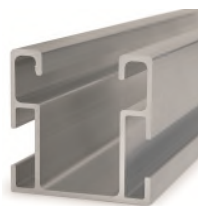
These are used in **assembled aluminium triangle fixing systems**, to complement the joint between the **TPA-R** “pre-assembled and adjustable aluminium triangle” and the **PSE-C** “aluminium profile for lateral assembled fixing” as a cross-connector between the two.

The specific design allows a connection between the side walls of the **PSE-C** profile, producing a strong pre-stressed joint without interfering with any profile operations.

Attachment is via a single M8 **DIN-933** bolt (included in the kit) which is introduced into the upper groove of the **TPA-R** triangle.

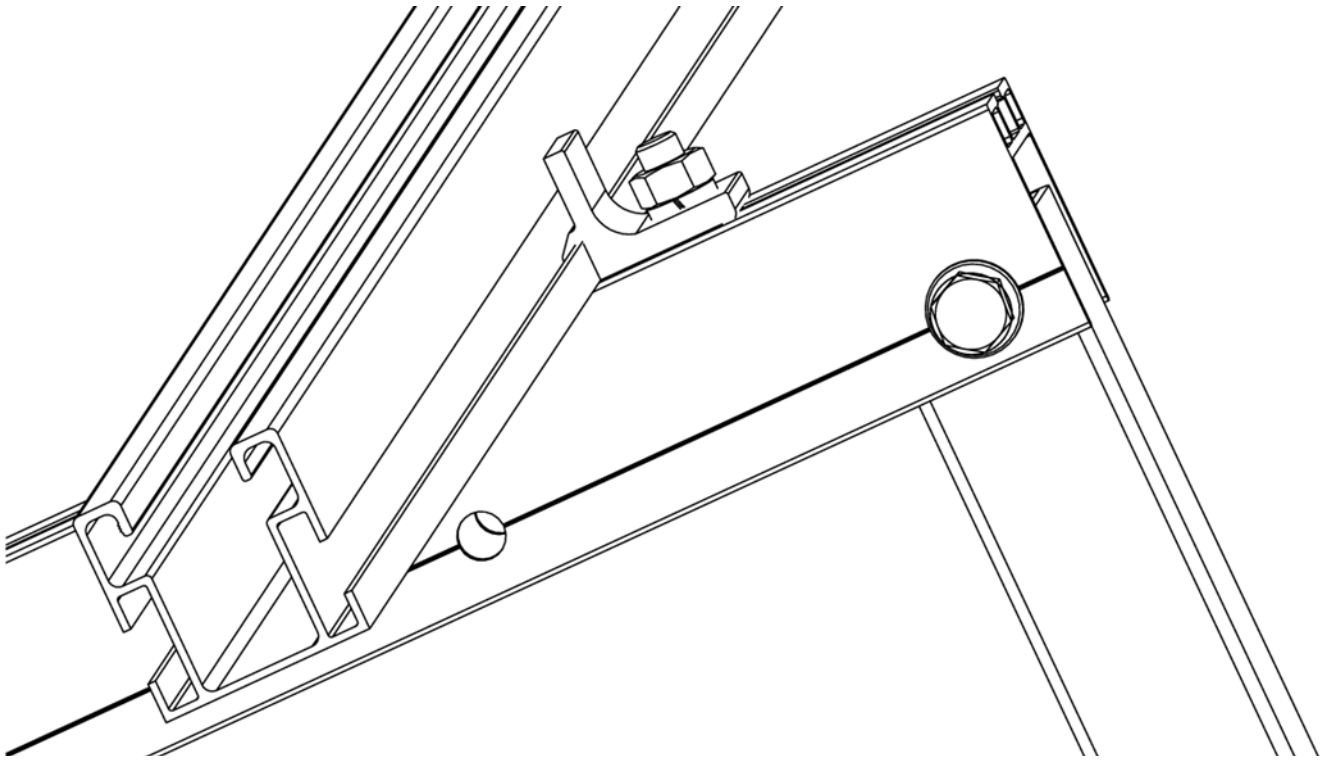


TPA-R



PSE-C

APPLICATION EXAMPLE



Application example: mounting on adjustable aluminium triangle.

1. RANGE

ITEM	CODE	PHOTO	DESCRIPTION	LENGTH	MATERIAL	FINISH
1	KFSFCM08		Cross connector for lateral fixing	30 mm		 Anodised
					 6005-T6 aluminium AISI 304 A2-70	

## 2. INSTALLATION INFORMATION

### 2.1 KFS-FC

### Cross connector for lateral fixing



**Material**



6005-T6 aluminium



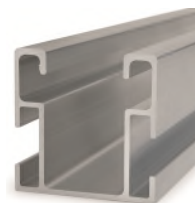
A2-70

**Finish**



Anodised

**Compatible with**



**PSE-C**  
Aluminium profile for lateral assembled fixing

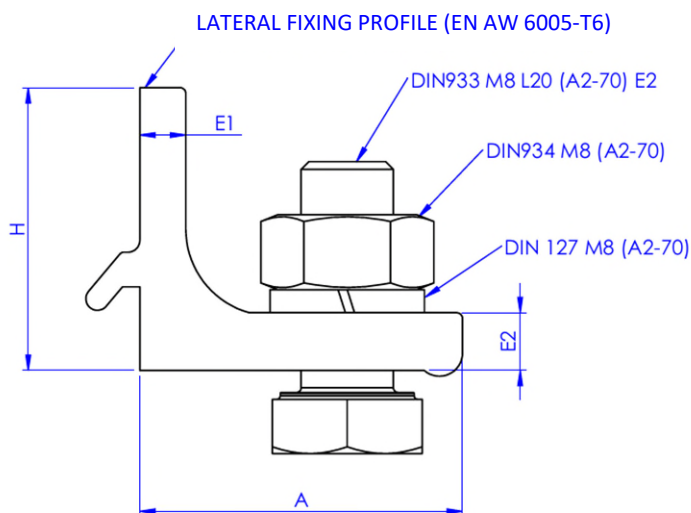
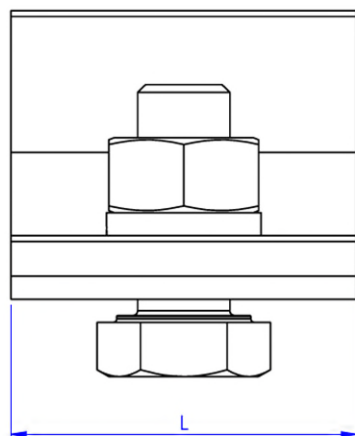


**TPA-R**  
Pre-assembled and adjustable aluminium triangle

**Measurement table**

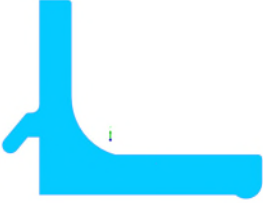
Code	A (mm)	H (mm)	E1 (mm)	E2 (mm)	L (mm)
KFSFCM08	28	24,5	4	5	30

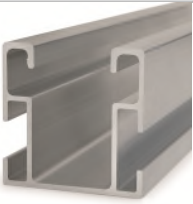

**Drawing**



**Mechanical properties of the materials**

	Yield strength $F_{y0.2}$ (N/mm <sup>2</sup> )	Ultimate load $F_u$ (N/mm <sup>2</sup> )	Elastic modulus $E$ (N/mm <sup>2</sup> )	Transverse elastic modulus $G$ (N/mm <sup>2</sup> )	Linear expansion coefficient $\alpha_L$ ( $\mu\text{m}/^\circ\text{C}$ )	Specific weight $\rho$ (kg/m <sup>3</sup> )
EN AW-6005-T6 aluminium	225	270	69,500	26,200	23.3	2,710
A2-70 stainless steel	450	700	193,000	78,000	17.3	7,930

Mechanical properties of the profile.				
	Area S (cm <sup>2</sup> )	Moment of inertia I <sub>x</sub> (cm <sup>4</sup> )	Moment of inertia I <sub>y</sub> (cm <sup>4</sup> )	Linear weight W (kg/m)
 KFS-FC/Profile	2,41	0,58	2,30	0,625

Installation properties					
Profile	Installation system	Bolt metric	Maximum installation tightening torque (Nm)	Installation wrench (mm)	Design load <b>NRd</b> (kN)
 PSE-C	 TPA-R	M8	14	SW13	1.45

We recommend that two **KFSFCM08** units are used to attach each **PSE-C** profile in each joint area.