



AR-FO



GA-FO



GE-SP

CHARACTERISTICS

- Hook and eye bolts with metric thread.
- Forged steel (AR-FO y GA-FO) and stamped steel (GE-SP).
- Valid for different applications.
- Variety of metrics, formats and lengths: installation flexibility.
- Zinc-plated coating.

APPLICATION EXAMPLES



1.RANGE

| ITEM | CODE | PHOTO | THREAD | COATING | MATERIAL |
|------|-------|-------|--------|---------|--|
| 1 | AR-FO | | | | Forged carbon steel Coating: zinc-plated $\geq 5 \mu\text{m s/ISO 4042}$ |
| 2 | GA-FO | | | | Forged carbon steel Coating: zinc-plated $\geq 5 \mu\text{m s/ISO 4042}$ |
| 3 | GE-SP | | | | Stamped carbon steel Coating: zinc-plated $\geq 5 \mu\text{m s/ISO 4042}$ |

2. INSTALLATION DATA

2.1 AR-FO

Forged eye bolt



Properties



Steel



Zinc-plated coating

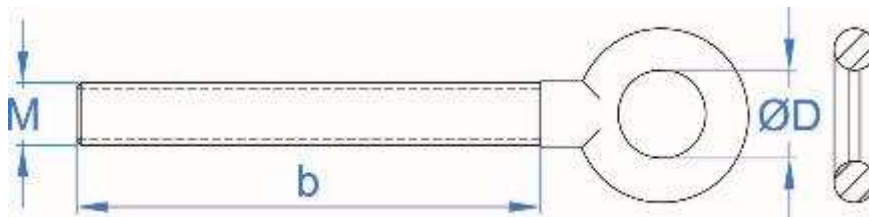


Metric Thread

Installation data

| CODE | | ARFOM06Z | ARFOM08Z | ARFOM10Z | ARFOM12Z | ARFOM16Z |
|--|------|----------|----------|----------|----------|----------|
| M: Metric | [mm] | 6 | 8 | 10 | 12 | 16 |
| b: Thread length | [mm] | 55 | 60 | 73 | 90 | 110 |
| ØD: Inside diameter | [mm] | 10 | 11,8 | 14,5 | 17 | 23,5 |
| N_{Rk}: Characteristic resistance | [kN] | 4,21 | 11,43 | 15,86 | 16,89 | 70,02 |
| γ_M: Safety factor | [--] | 1,40 | 1,40 | 1,40 | 1,40 | 1,40 |
| N_{Rd}: Design resistance* | [kN] | 3,00 | 8,16 | 11,33 | 12,07 | 50,01 |

DRAWING



* In case of using it in combination with an anchor, check its technical data sheet.

2.2 GA-FO

Forged hook bolt



Properties



Steel

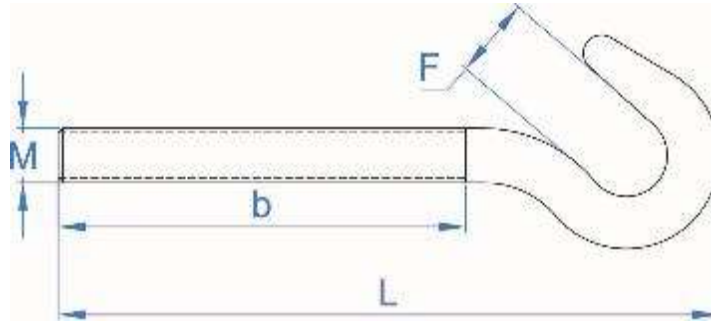
Zinc-plated coating

Metric Thread

Installation data

| CODE | | GAFOM06Z | GAFOM08Z | GAFOM10Z | GAFOM12Z | GAFOM16Z |
|--|------|----------|----------|----------|----------|----------|
| M: Metric | [mm] | 6 | 8 | 10 | 12 | 16 |
| b: Thread length | [mm] | 55 | 60 | 73 | 90 | 110 |
| F: opening hook | [mm] | 8 | 10 | 12,5 | 16 | 20 |
| L: total length | [mm] | 82 | 98 | 116,5 | 146 | 185 |
| N_{Rk}: Characteristic resistance | [kN] | 1,64 | 3,19 | 5,00 | 8,16 | 14,8 |
| γ_M: Safety factor | [-] | 1,40 | 1,40 | 1,40 | 1,40 | 1,40 |
| N_{Rd}: Design resistance* | [kN] | 1,17 | 2,28 | 3,57 | 5,83 | 10,57 |

DRAWING



* In case of using it in combination with an anchor, check its technical data sheet.

2.3 GE-SP

Hook spiral



Properties



Steel



Zinc-plated coating

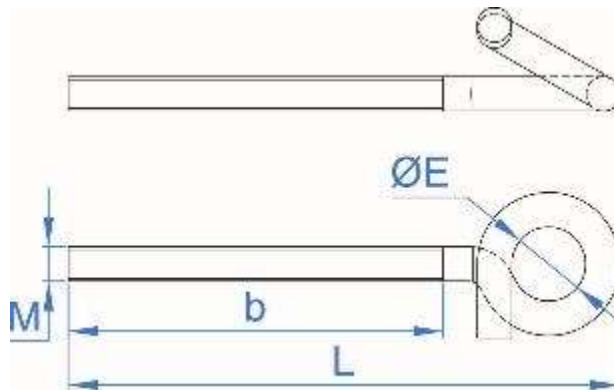


Metric Thread

Installation data

| CODE | | GESPM08ZE | | GESPM10ZE | |
|--|------|-----------|--|-----------|--|
| M: Metric | [mm] | 8 | | 10 | |
| b: Thread length | [mm] | 65 | | 78 | |
| ØE: Inside diameter | [mm] | 22 | | 22 | |
| L: total length | [mm] | 115 | | 135 | |
| N_{Rk}: Characteristic resistance | [kN] | 3,0 | | 5,0 | |
| γ_M: Safety factor | [--] | 1,40 | | 1,40 | |
| N_{Rd}: Design resistance* | [kN] | 2,14 | | 3,57 | |

DRAWING



* In case of using it in combination with an anchor, check its technical data sheet.