



CM-BP



CM-BT



CM-TA



CM-TP



CM-TENSO



CM-TENSOVE



CM-TT



CM-UN
















CHARACTERISTICS

- Elements for assembling torsion galvanized wire fences, installed with galvanized steel post.
- Made of zinc plated steel to prevent corrosion.
- Stoppers are installed in the top of the post and prevent the water to get into the post, reducing the corrosion inside the post because of the contact of steel with water.
- Clamps ensure the vertical position of the tightened posts installed with braces.
- To ensure the fence tension three wires are installed at different heights. These wires must be tensed with wire tightening parts installed in the posts.

APPLICATION EXAMPLES



1. RANGE

ITEM	CODE	PHOTO	MATERIAL	COATING
1	CM-BP		Zinc-plated steel	
2	CM-BT		Zinc-plated steel	
3	CM-TA		Zinc-plated steel	
4	CM-TP		Zinc-plated steel	
5	CM-TENSO		Zinc-plated steel	
6	CM-TENSOVE		Zinc-plated steel	
7	CM-TT		Zinc-plated steel	
8	CM-UN		Zinc-plated steel	

2. TECHNICAL DATA

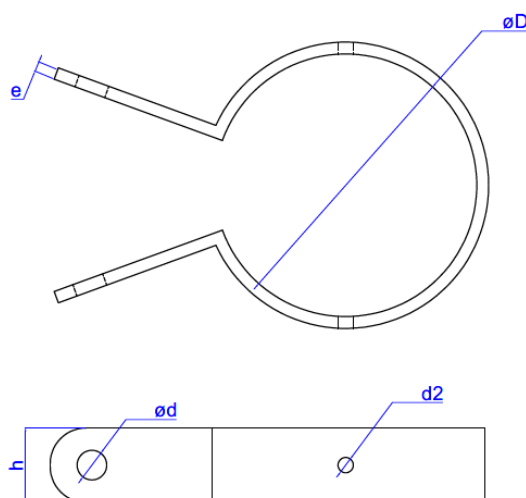
2.1 CM-BP

Clamp post



Technical Data

Code	Inside diameter	Hole diameter	Thickness	Height	Diameter d2 [d2]
	ØD	Ød	e	h	
	[mm]	[mm]	[mm]	[mm]	
CMBRPOS33	33 – 35	9	2,0	22	5
CMBRPOS40	40 – 43				
CMBRPOS42	42 – 45				
CMBRPOS48	48 – 52				
CMBRPOS50	50 – 53				
CMBRPOS60	60 – 62				



Characteristics

- Clamp for tightening post to tightened post, ensuring stability of the fence.
- Wide range of diameters available.
- Clamp is fixed with 9 mm diameter screw.

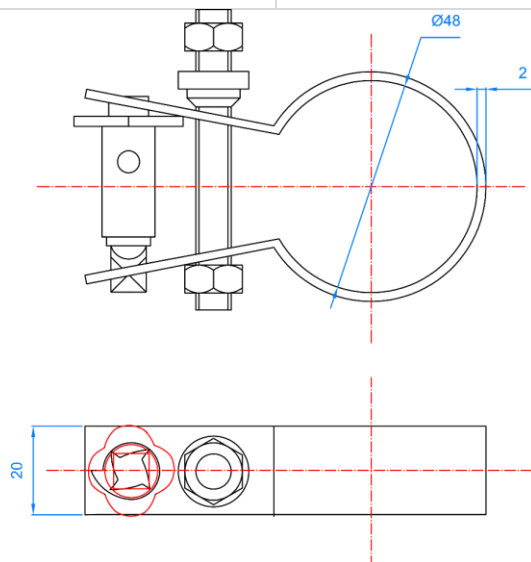
2.2 CM-BT

Tightening clamp



Technical Data

Code	Inside Diameter	Thickness	Height
	[mm]	[mm]	[mm]
CMBRTEN48	48	2	20



Characteristics

- Tightening clamp for fixing post to tightened post.
- Fixing the post to tightened post ensures stability of the fence, avoiding lateral post movements.
- Antispin wire tightener ensures tension of the wire (up to 5mm diameter), and therefore the tension of the fence.
- Wide range of diameters are available.
- Clamp is fixed with 9 mm diameter screw.

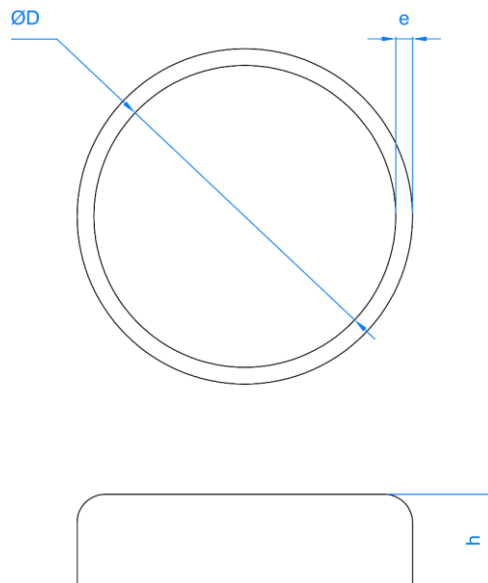
2.3 CM-TA

Stopper



Technical Data

Code	Inside Diameter	Thickness	Height
	ØD	e	h
	[mm]	[mm]	[mm]
CMTAPON33	33 – 35	1,8	16,5
CMTAPON40	40 – 43		
CMTAPON42	42 – 45		
CMTAPON48	48 – 52		
CMTAPON50	50 – 53		
CMTAPON60	60 – 62		



Characteristics

- Zinc-plated steel stopper for torsion metal fence.
- Prevent the water to get into the post, reducing the corrosion inside the post because of the contact of steel with water.
- Fit in the post, avoiding installation process.
- Wide range of diameters available.

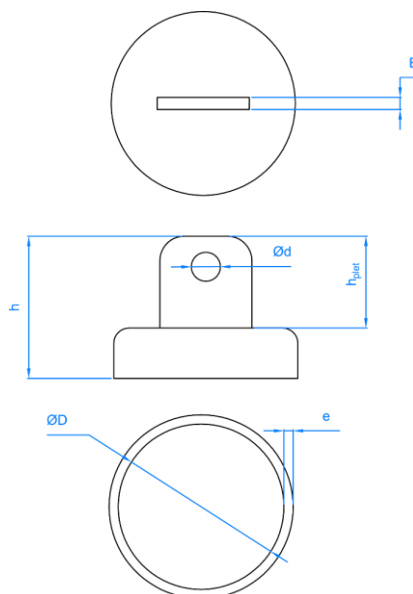
2.4 CM-TP

Post stopper



Technical Data

Code	Inside Diameter	Hole diameter	Thickness	Sheet thickness	Height	Sheet height
	$\varnothing D$	$\varnothing d$	e	E	h	H _{plet}
	[mm]	[mm]	[mm]	[mm]	[mm]	[mm]
CMTAPOS33	33 – 35	9,5	1,8	3	60	43
CMTAPOS40	40 – 43					
CMTAPOS42	42 – 45					
CMTAPOS48	48 – 52					



Characteristics

- Zinc-plated steel stopper for torsion metal fence with drilled plate to transform the simple post into tightened post.
- Prevent the water to get into the post, reducing the corrosion inside the post because of the contact of steel with water.
- Fit in the post, avoiding installation process.
- Wide range of diameters available.

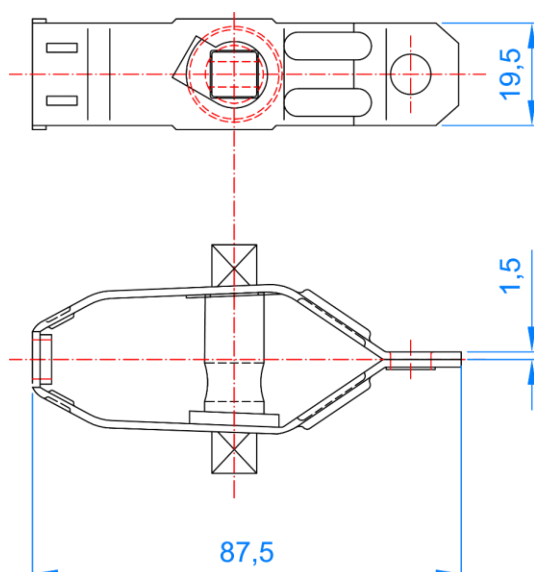
2.5 CM-TENSO / CEM-TENSOVE

Wire tightener



Technical Data

Code	Coating	Length	Thickness	Height
		[mm]	[mm]	[mm]
CMTENSOAL	Zinc plated	87,5	1,5	19,5
CMTENSOVE	Green painted – RAL 6005			



Characteristics

- Wire tightener is composed of three parts, main body, reel and washer.
- Torsion metal fence has three wires all along the fence at different heights, making the fence solid.
- Wire tightener ensures the tension of these wires by rolling the wire (up to 5 mm diameter) with the antispin reel.
- It is used for connecting cables between each other or cable fences.
- It is used in the post where the metal fence is placed.
- Minimum recommended tension load is 2.5 kN.

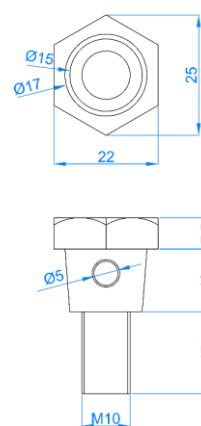
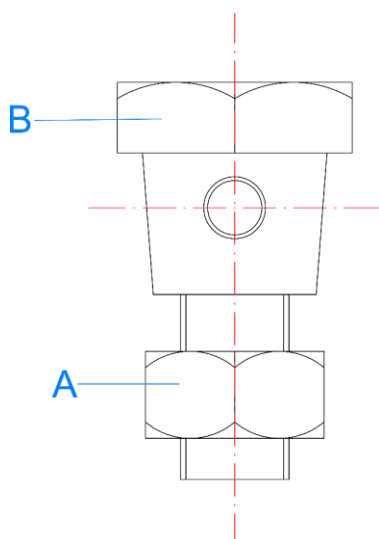
2.6 CM-TT

Wire tightening screw



Technical Data

Code	Coating	Length
		[mm]
CMTENSOTO	Zinc-plated	37,5



Characteristics

- Torsion metal fence has three wires all along the fence at different heights, making the fence solid.
- Wire tightener ensures the tension of these wires by rolling the wire (up to 5 mm diameter) with the bolt and the nut.
- It is used in the posts where the metal fence is placed.

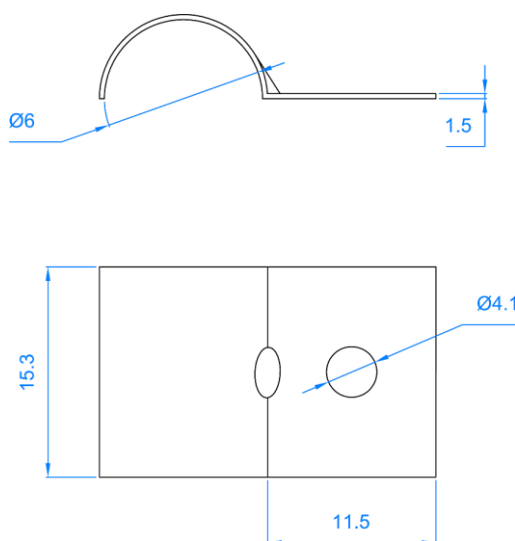
2.7 CM-UN

Fastener



Technical Data

Code	Coating	Ø Diameter	Thickness	Height
		[mm]	[mm]	[mm]
CMUNAAGUJ	Zinc-plated	6	1,5	15,3



Characteristics

- It is used for guiding the tension wire all over the fence.
- Dimensions of the fastener allow the wire (up to 6 mm diameter) to move freely while applying tension on it.
- The fastener is fixed to the post by the 41 mm drill of the plate.