



ARVUL



ARPAR



ARVUL A2



ARPAR A2



ARINOM

CHARACTERISTICS

- Metallic washer with EPDM seal.
- Used for roofing and facades leak-tight fixings.
- Resistant to ultraviolet rays and ozone effect
- Manufactured in galvanized steel and stainless steel
- Different diameters.

1. RANGE

ITEM	CODE	PHOTO	MATERIAL	COATING
1	ARVUL		EN10142-DX51D+Z140-MB-O EPDM based on ASTM D2240-15	
2	ARVUL A2		Stainless Steel A2 (AISI 304) EPDM based on ASTM D2240-15	
3	ARINOM30		Stainless Steel A2 (AISI 304) EPDM based on ASTM D2240-15	
4	ARPAR		Z120 carbon steel, Zinc plated EPDM based on ASTM D2240-15	
5	ARPAR A2		Stainless Steel A2 (AISI 304) EPDM based on ASTM D2240-15	

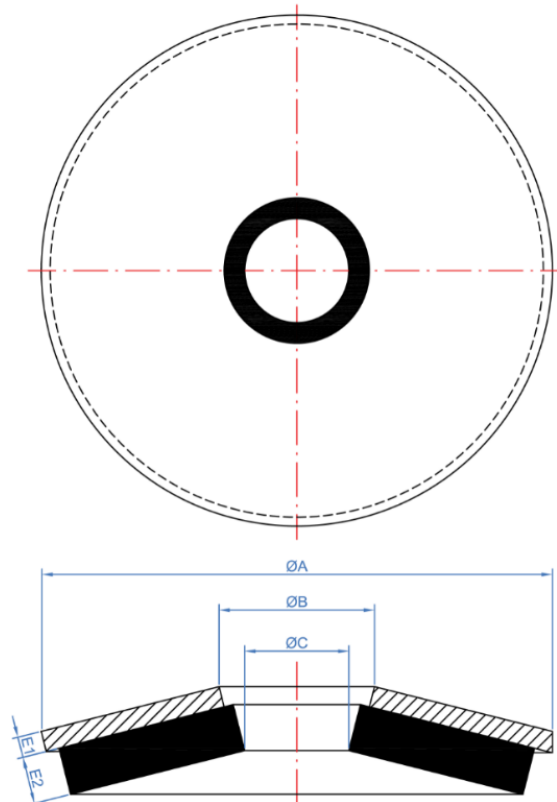
2. INSTALLATION DATA

2.1 ARVUL



CODE	Valid for screws:	ØA	ØB	ØC	E1	E2
ARANE14	Ø4,2 – Ø4,8	14,00	6,75	2,5	0,80	2,20
ARANE16	Ø4,2 – Ø6,3	16,00	6,75	2,75	0,80	2,20
ARANE18	Ø4,2 – Ø6,3	18,00	6,75	3,25	0,80	2,20
ARANE25	Ø4,8 – Ø6,3	25,00	6,75	3,5	0,80	2,20

DRAWING

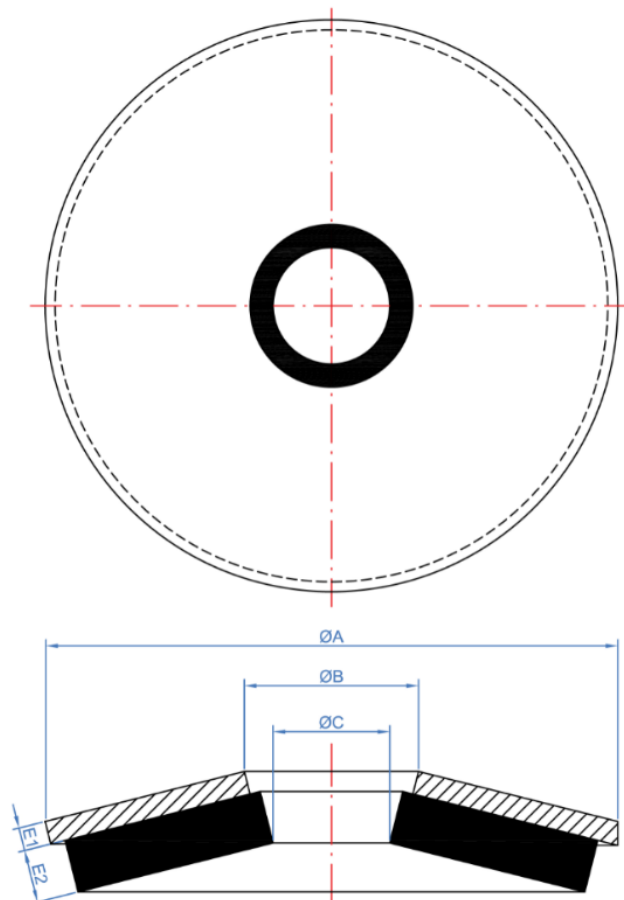


2.2 ARVUL A2



CODE	Valid for screws:	ØA	ØB	ØC	E1	E2
ARINO14	Ø4,2 – Ø4,8	14,00	6,75	2,5	0,80	2,20
ARINO16	Ø4,2 – Ø6,3	16,00	6,75	2,75	0,80	2,20
ARINO18	Ø4,2 – Ø6,3	18,00	6,75	3,25	0,80	2,20
ARINO25	Ø4,8 – Ø6,3	25,00	6,75	3,5	0,80	2,20

DRAWING

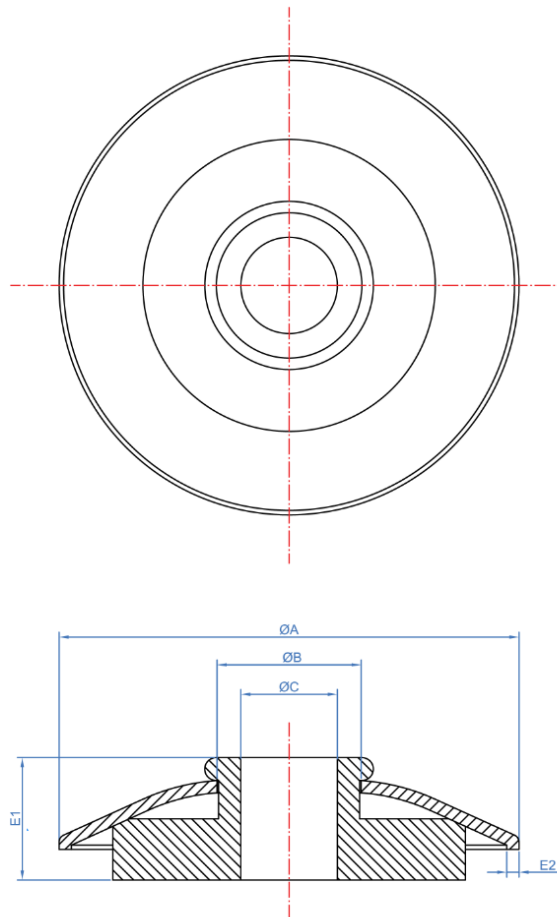


2.3 ARINOM



CODE	Valid for screw:	ØA	ØB	ØC	E1	E2
ARINOM30	M6	30	9,40	6,30	8,00	0,80

DRAWING

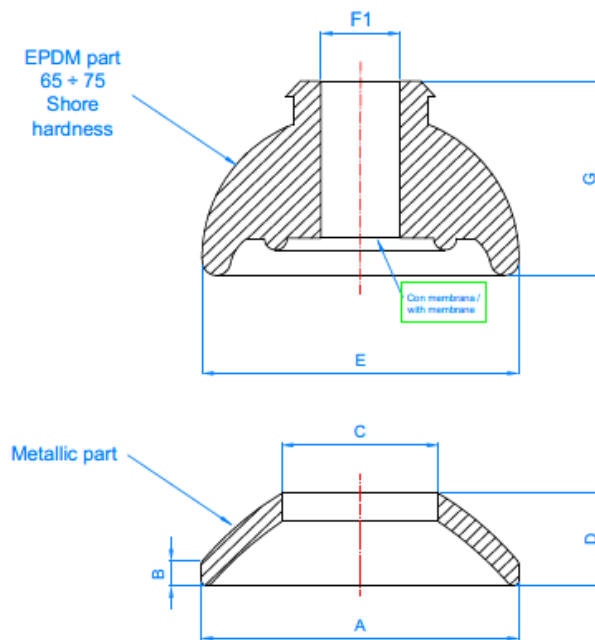


2.4 ARPAR



CODE	A	B	C	D	E	F1	G
ARPAR25	22,00	1,00	10,30	3,00	25,00	7,00	13,00

DRAWING



2.5 ARPAR A2



CODE	A	B	C	D	E	F1	G
ARPARA225	22,00	1,00	10,30	3,00	25,00	7,00	13,00

DRAWING

