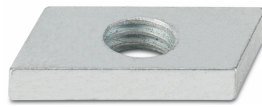
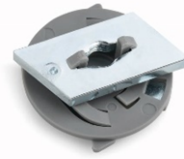




TO-GU



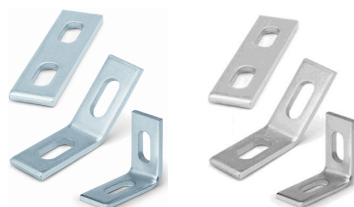
TU-GU



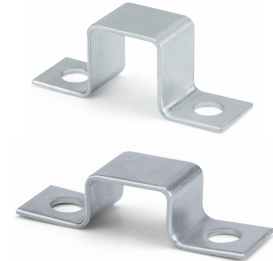
TU-GRA



TO-GR



EG-Z / EG-A2



PG-Z / PG-A2



PU-Z



SO-TP



SO-PG

CHARACTERISTICS

- Different accessories for support guides that offer a wide variety of installation methods.
- Compatible with the clamp range from the catalogue, both for piping and electrical needs.
- Ideal for specialized installers in this field.
- In a variety of materials:
 - Galvanized: for supporting electrical installations or simple indoor/outdoor fluid installations with moderate corrosion.
 - Stainless steel: For outdoor use or in humid or pollutant (chlorine-free) industrial environments.
 - PVC: for light loads. Easy installation (may be cut without tools) and good resistance to chemical agents in general.

BASE MATERIAL

