

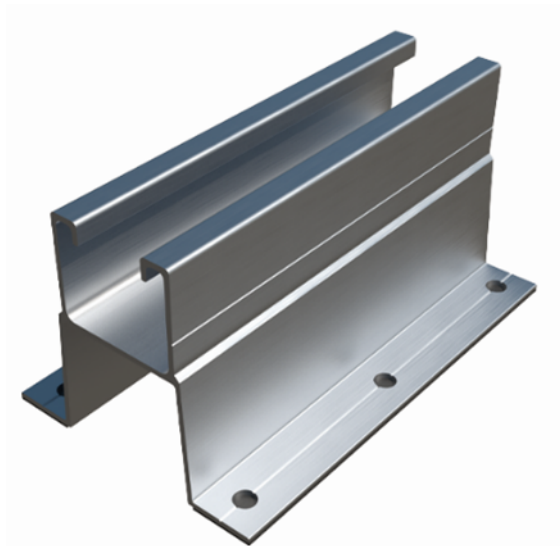
PSA-AV

PRODUCT DESCRIPTION

- Winged aluminium profile for direct fixing on valley.

CHARACTERISTICS

- Profile for installation of solar panels on pitched roofs.
- Extruded profile in aluminium alloy 6005-T6 with anodised finish.
- For outside use.
- Designed for coplanar installation systems.
- Assembly of interrupted profiles
- Direct fixing to the valley area between the ribs, on sheet metal roofs and sandwich panels.
- Side wings with six drilled holes for ease of fixing.
- Includes two EPDM adhesive strips below the side wings to facilitate positioning and ensure watertightness.
- Large 90 mm base to ensure a secure fixing.
- 75 mm profile height which exceeds the height of the ribs.
- General thickness – 1.8 mm.
- Central groove compatible with INDEXTRUT accessories.



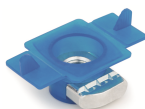
ASSEMBLY APPLICATIONS/ACCESSORIES



KFRSC3050 / KFRSCN3050



PGSA26 /
PGSN26



TURXA208



6921I08070

These are used in **aluminium coplanar direct fixing systems in discontinuous profile format**, as structural elements for fixing and supporting solar panels.

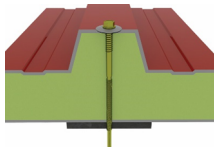

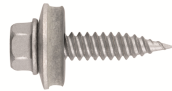

In order to attach solar panels to the profile, one of the following assembly accessories should be used:

1. The kit **KFRSC3050 / KFRSCN3050** "quick pre-assembled clamp".
2. The set of references:
 - One **PGSA26 / PGSN26** "aluminium gauge for solar frame".
 - One **TURXA208** "INDEXTRUT quick nut. Stainless steel A2.
 - One **6921I08070** "Screw DIN-6921 hexagonal flanged bolt with serrations. Stainless steel A2" size M8x70 all-thread bolt.

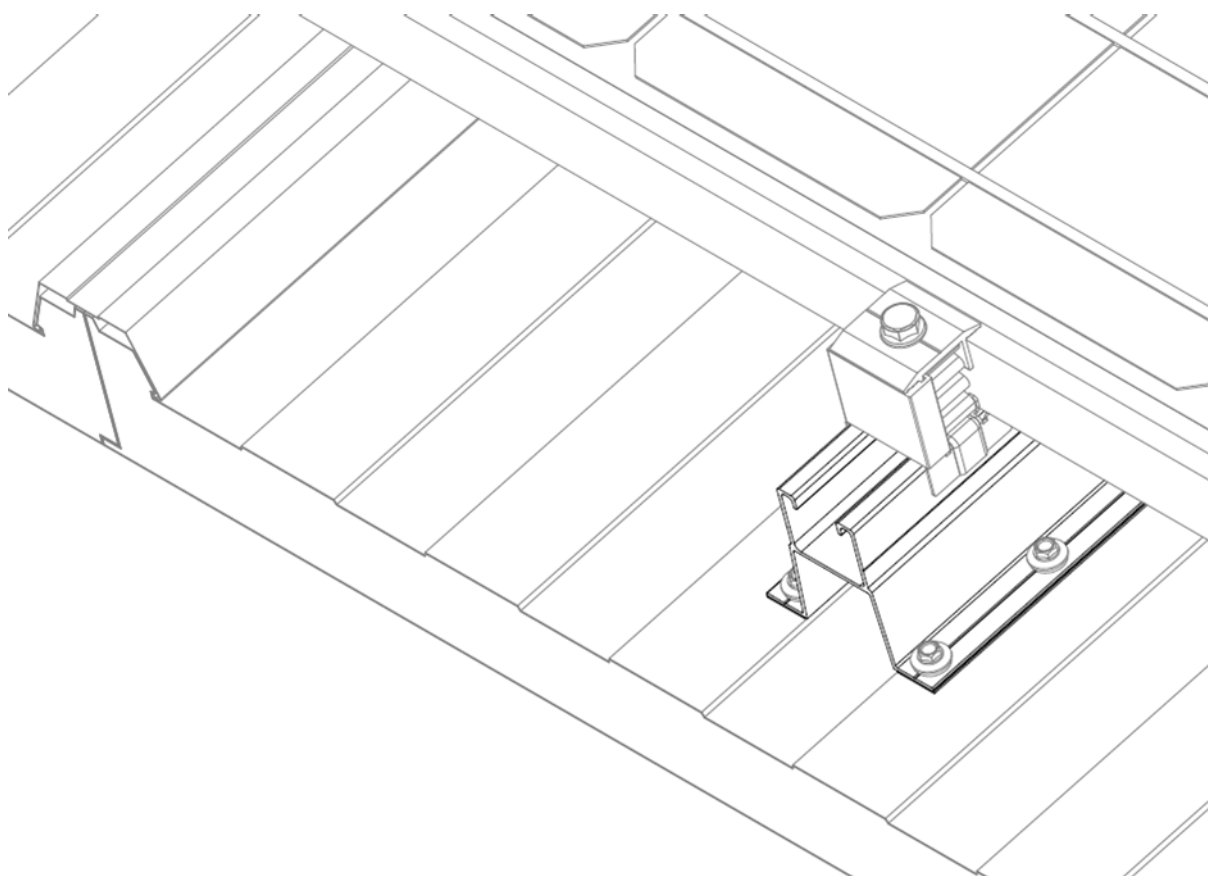
TECHNICAL DATA SHEET:

Solar range/Profiles, joints, channels and connectors for supporting structures

BASE MATERIAL/FIXING ACCESSORIES

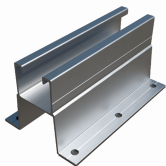

BASE MATERIAL		FIXING ACCESSORIES			
	Sandwich panel		Metal sheet	TAC-N/TAC-B Atlantis/Bimetal thin sheet screw	AUENI Self-tapping screw

APPLICATION EXAMPLES



Application example 1: Direct fixing by thin sheet screws to a 2-ribs sandwich panel with flashing.

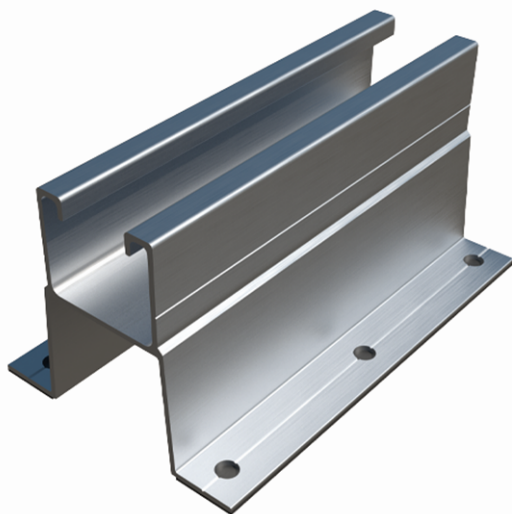
1. RANGE

ITEM	CODE	PHOTO	DESCRIPTION	LENGTH	MATERIAL
1	PSAAV0150		Winged aluminium profile for direct fixing on valley.	150 mm	 6005-T6 aluminium

2. INSTALLATION INFORMATION

2.1 PSA-AV

Winged aluminium profile for direct fixing on valley



Material



6005-T6 aluminium

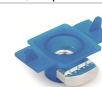
Assembly accessories



KFRSC3050 / KFRSCN3050
Quick pre-assembled clamp



PGSA26 /
PGSN26
Simple clamp



TURXA208
INDEXTRUT quick nut

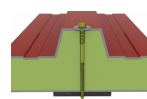


6921I08070
Screw DIN-6921. Stainless
steel A2-70

Base materials



Metal sheet



Sandwich panel

Fixing accessories



TAC-N/TAC-B
Atlantis/Bimetal thin
sheet screw

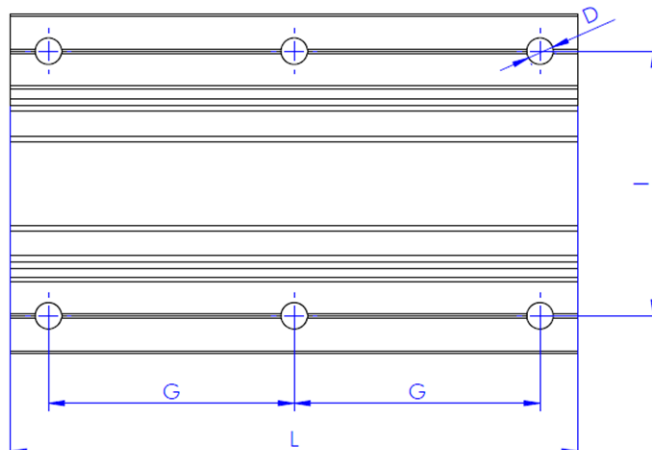
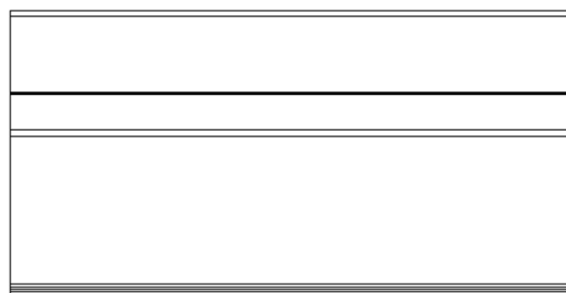
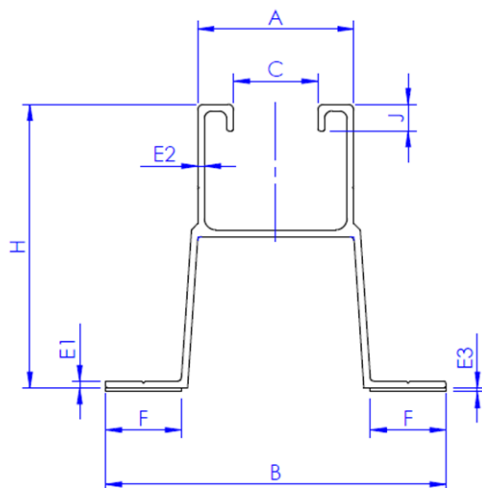


AUENI
Self-tapping screw

Measurement table

Code	A (mm)	B (mm)	C (mm)	D (mm)	E1 (mm)	E2 (mm)	E3 (mm)	F (mm)	G (mm)	H (mm)	I (mm)	J (mm)	L (mm)
PSAAV0150	41	90	22	7	1.8	1.8	1	20	65	75	70	7	150

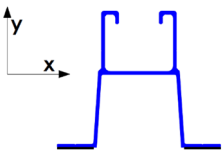
Drawing



Mechanical properties of the material

	Yield strength $F_{y0.2}$ (N/mm ²)	Ultimate load F_u (N/mm ²)	Elastic modulus E (N/mm ²)	Transverse elastic modulus G (N/mm ²)	Linear expansion coefficient α_L ($\mu\text{m/mK}$)	Specific weight ρ (kg/m ³)
EN AW6005-T6 aluminium	225	270	69,500	26,200	23.3	2,710

Mechanical properties of the profile.

	Area S (cm ²)	Moment of inertia I_x (cm ⁴)	Moment of inertia I_y (cm ⁴)	Section modulus W_x (cm ³)	Section modulus W_y (cm ³)	Linear weight W (kg/m)
 <p>PSA-AV</p>	4.7	28.14	23.73	7.23	5.27	1.27