

PROFILES AND SUPPORTS

2022



INDEX[®]
A PERFECT FIXING

GP

Type "C" profiles for light loads

GP-Z

Zinc-plated



METAL



CODE	SIZE	€/100	LENGTH	
GPZ201010	20 x 10 x 1 x 2000	872,193	2.000	30
GPZ250808	25 x 8 x 0,80 x 1000	604,403	1.000	30

GP-G

ATLANTIS C2-H



METAL



CODE	SIZE	€/100	LENGTH	
GPG271812	27 x 18 x 1,25 x 2000	1.478,793	2.000	10
GPG283018	28 x 30 x 1,8 x 2000	2.967,427	2.000	10
GPG351312	35 x 13 x 1,2 x 2000	2.923,683	2.000	10
GPG384020	38 x 40 x 2 x 2000	5.041,500	2.000	6
GPG402015	40 x 20 x 1,50 x 2000	2.302,116	2.000	10

GP-A2

A2 Stainless steel



STAINLESS



CODE	SIZE	€/100	LENGTH	
GPI271812	27 x 18 x 1,25 x 2000	12.032,189	2.000	6
GPI283015	28 x 30 x 1,50 x 2000	27.975,448	2.000	6

GP-PL

Yellow plastified



METAL



CODE	SIZE	€/100	LENGTH	
GPP271812	27 x 18 x 1,25	2.069,667	1.000	10

GP-PVC

PVC



METAL



CODE	SIZE	€/100	LENGTH	
GPV251120	25 x 11 x 2 x 1000	843,660	1.000	30



Type "C" profiles for light loads

GP

METAL



CODE	SIZE	€/100	LENGTH	
GL0357510	35x7,5x1,0	1.248,443	2.000	10
GL0351515	35x15x1,5	1.655,013	2.000	10

GL-O

ATLANTIS C2-M Smooth Omega guide



METAL



CODE	SIZE	€/100	LENGTH	
GP0357510	35x7,5x1,0	1.258,747	2.000	10
GP0351515	35x15x1,5	1.649,893	2.000	10

GP-O

ATLANTIS C2-M Perforated Omega guide



Type "C" supports for light loads

SP

METAL



CODE	SIZE	€/100	LENGTH	
SPZ271820	27 x 18 x 1,25 x 200	776,810	200	10
SPZ271830	27 x 18 x 1,25 x 300	838,267	300	10
SPZ384020	38 x 40 x 2 x 200	1.270,253	200	10
SPZ384025	38 x 40 x 2 x 250	1.425,973	250	10
SPZ384030	38 x 40 x 2 x 300	1.567,947	300	10
SPZ384035	38 x 40 x 2 x 350	1.679,877	350	10
SPZ384040	38 x 40 x 2 x 400	1.957,943	400	10
SPZ384050	38 x 40 x 2 x 500	2.377,794	500	10
SPZ384060	38 x 40 x 2 x 600	2.647,880	600	10

SP-Z

Zinc-plated perforated support



METAL



CODE	SIZE	€/100	SUITABLE FOR	
SPV2718	M10 (27/18-28/30)	556,423	27/18 - 28/30	50
SPV3840	M10 (38/40-40/20)	591,583	38/40 - 40/20	50

SP-V

Vertical support



SP

Type "C" supports for light loads

SP-H

Horizontal support



METAL



CODE	SIZE	€/100	SUITABLE FOR	
SPH2718	M10 (27/18-28/30)	497,013	27/18 - 28/30	50
SPH3840	M10 (38/40-40/20)	515,487	38/40 - 40/20	50

SP-HX

Horizontal channel arm



METAL



CODE	SIZE	€/100	SUITABLE FOR	
SPGH2718	M10 (27/18-28/30)	780,340	27/18 - 28/30	10
SPGH3840	M10 (38/40-40/20-41/21-41/41)	1.516,640	38/40 - 40/20 - 41/21 - 41/41	10

PE-AC

Accessories for type "C" profiles

TO-GU

Guide stop screw



METAL



CODE	SIZE	€/100	SUITABLE FOR		
TG230620	M6 x 20	66,583	20/10 - 27/18 - 28/30 - 25/08 - 25/11	100	800
TG230820	M8 x 20	82,883	27/18 - 28/30 - 25/08	100	400
TG230830	M8 x 30	87,237	27/18 - 28/30 - 25/08	100	600
TG340830	M8 x 30	120,040	38/40 - 40/20	100	600
TG341030	M10 x 30	161,920	38/40 - 40/21	100	400

TO-GR

Fast-fixing guide stop screw



METAL



CODE	SIZE	€/100	SUITABLE FOR		
TGR230620	M6x20	184,313	20/10 - 25/08 - 25/11 - 27/18 - 28/30	100	600
TGR230820	M8x20	194,827	20/10 - 25/08 - 25/11 - 27/18 - 28/30	100	600
TGR230830	M8x30	199,467	20/10 - 25/08 - 25/11 - 27/18 - 28/30	100	600
TGR340830	M8x30	250,530	27/18 - 28/30 - 38/40 - 40/20	100	400
TGR341030	M10x30	282,887	27/18 - 28/30 - 38/40 - 40/20	50	300

TU-GU

Channel nuts



METAL



CODE	SIZE	€/100	SUITABLE FOR		
TUG201006	M6	17,963	20/10 - 25/08 - 27/18 - 28/30	100	3.000
TUG201008	M8	17,963	20/10 - 25/08 - 27/18 - 28/30	100	2.400
TUG271808	M8	48,370	27/18 - 28/30 - 38/40 - 40/20	100	1.200
TUG271810	M10	48,370	27/18 - 28/30 - 38/40 - 40/20	100	1.200

Accessories for type "C" profiles

PE-AC

METAL



CODE	SIZE	€/100	SUITABLE FOR		
TUGRA2706	M6	165,203	20/10 - 25/08 - 25/11 - 27/18 - 28/30	50	600
TUGRA2708	M8	165,203	20/10 - 25/08 - 25/11 - 27/18 - 28/30	50	600
TUGRA3808	M8	211,863	27/18 - 28/30 - 38/40 - 40/20	50	600
TUGRA3810	M10	225,540	27/18 - 28/30 - 38/40 - 40/20	50	600

TU-GRA

Guide nut with fast-fixing washer



METAL



CODE	SIZE	€/100	SUITABLE FOR		
EMZ45	50 x 50 45°	126,340	25/11 - 27/18 - 28/30 - 38/40 - 40/20 - 41/21 - 41/41	100	400
EMZ90	54 x 54 90°	126,340	25/11 - 27/18 - 28/30 - 38/40 - 40/20 - 41/21 - 41/41	100	300
EMZ00	100 180°	123,183	25/11 - 27/18 - 28/30 - 38/40 - 40/20 - 41/21 - 41/41	100	-

EG-Z

Zinc-plated channel bracket



STAINLESS



CODE	SIZE	€/100	SUITABLE FOR		
EMI45	50 x 50 45°	617,260	27/18 - 28/30 - 38/40	50	200
EMI90	54 x 54 90°	617,260	27/18 - 28/30 - 38/40	50	-
EMI00	100 180°	611,967	27/18 - 28/30 - 38/40	50	200

EG-A2

A2 Stainless steel channel bracket



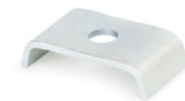
METAL



CODE	SIZE	€/100	SUITABLE FOR		
PUZ2718	M8 (27/18-28/30)	56,987	50	-	-
PUZ3840	M8 (38/40)	63,023	50	-	-

PU-Z

Union plate for profiles



METAL



CODE	SIZE	€/100	SUITABLE FOR		
PGZ2718	27 / 18 x 81	106,597	27/18	50	300
PGZ2830	28 / 30 x 81	129,097	28/30	50	300
PGZ3840	38 / 40 x 93	144,030	38/40	50	100

PG-Z

Zinc-plated Channel U-fitting



STAINLESS



CODE	SIZE	€/100	SUITABLE FOR		
PGI2718	27 / 18 x 81	301,077	27/18	50	300
PGI2830	28 / 30 x 81	346,240	28/30	50	200
PGI3840	38 / 40 x 93	421,507	38/40	50	100

PG-A2

A2 Stainless steel Channel U-fitting



PE-AC

Accessories for type "C" profiles

SO-TP

Plastic caps



METAL



CODE	SIZE	€/100	SUITABLE FOR		
SOTP2718	27/18	31,497	27/18	100	400
SOTP2830	28/30	37,880	28/30	100	300
SOTP3840	38/40	61,410	38/40	100	300

GPX

Indextrut Profiles for heavy loads

GP-X 21

Indextrut Perforated guide 41x21



METAL



CODE	SIZE	€/100	LENGTH	
GPX412115	41 x 21 x 1,5	5.172,350	3.000	10
GPX412120	41 x 21 x 2	5.550,103	3.000	10
GPX412125	41 x 21 x 2,5	7.970,713	3.000	6
GPX2M412120	41 x 21 x 2	3.881,187	2.000	10

GP-X 41

Indextrut Perforated guide 41x41



METAL



CODE	SIZE	€/100	LENGTH	
GPX414115	41 x 41 x 1,5	6.278,517	3.000	10
GPX414120	41 x 41 x 2	9.120,367	3.000	6
GPX414125	41 x 41 x 2,5	11.254,700	3.000	6
GPX2M414120	41 x 41 x 2	6.146,427	2.000	10

SPX

Indextrut Supports for heavy loads

SP-X

Indextrut Perforated support



METAL



CODE	SIZE	€/100	LENGTH	
SPX412115	41 x 21 x 2,5 x 150	1.123,907	150	10
SPX412130	41 x 21 x 2,5 x 300	1.547,242	300	10
SPX412145	41 x 21 x 2,5 x 450	1.964,934	450	10
SPX414115	41 x 41 x 2,5 x 150	1.456,371	150	10
SPX414130	41 x 41 x 2,5 x 300	2.040,254	300	10
SPX414145	41 x 41 x 2,5 x 450	2.667,989	450	10
SPX414160	41 x 41 x 2,5 x 600	3.354,439	600	10
SPX414175	41 x 41 x 2,5 x 750	4.044,979	750	10
SPX414110	41 x 41 x 2,5 x 1000	5.086,880	1.000	2

SP-RX

Indextrut Rectangular-base "U" support



METAL



CODE	SIZE	€/100	SUITABLE FOR	
SPRXH4121	M12 (41/21-41/41)	1.492,127	Indextrut 41/41 - 41/21	12
SPRXV4121	M12 (41/21-41/41)	1.492,127	Indextrut 41/41 - 41/21	12



Indextrut Supports for heavy loads

SPX

METAL



CODE	SIZE	€/100	SUITABLE FOR	
SPUX412100	M16 (41/21-41/41)	1.896,047	Indextrut 41/41 - 41/21	12
SPUX412145	M16 (41/21-41/41)	1.896,047	Indextrut 41/41 - 41/21	12

SP-UX

Indextrut Square-base "U" support



METAL



CODE	SUITABLE FOR	€/100	
PRX01	Indextrut 41/41 - 41/21	1.647,360	12

PR-X

Indextrut Adjustable support



METAL



CODE	SIZE	€/100	SUITABLE FOR	
RESX300	252 x 252 x 6 (300)	1.250,963	10	20
RESX550	428 x 428 x 6 (550)	1.992,833	10	20

RE-SX

Indextrut Support reinforcement



Indextrut Accessories for profiles

PX-AC

METAL



CODE	SIZE	€/100	SUITABLE FOR		
TGX0840	M8 x 40	119,690	Indextrut 41/41 - 41/21	100	400
TGX0860	M8 x 60	128,283	Indextrut 41/41 - 41/21	50	300
TGX1040	M10 x 40	152,987	Indextrut 41/41 - 41/21	50	300
TGX1060	M10 x 60	171,597	Indextrut 41/41 - 41/21	50	200

TG-X

Indextrut Guide stop screw



METAL



CODE	SIZE	€/100	SUITABLE FOR	
TGRX0830	M8x30	280,567	41/41 - 41/21	100
TGRX0860	M8x60	293,400	41/41 - 41/21	50
TGRX1030	M10x30	318,930	41/41 - 41/21	50
TGRX1060	M10x60	338,590	41/41 - 41/21	50

TO-GRX

Indextrut Fast-fixing guide stop screw



METAL



CODE	SIZE	€/100	SUITABLE FOR		
TUGX08	M8	73,290	Indextrut 41/41 - 41/21	100	800
TUGX10	M10	81,040	Indextrut 41/41 - 41/21	100	800

TU-GX

Indextrut Guide nut



PX-AC

Indextrut Accessories for profiles

TU-MU

Indextrut channel spring nut



METAL



CODE	SIZE	€/100	SUITABLE FOR		
TUGXMU08	M8	107,097	Indextrut 41/41	100	400
TUGXMU10	M10	107,097	Indextrut 41/41	100	400

TU-RX

Indextrut Fast-fixing guide nut



METAL



CODE	SIZE	€/100	SUITABLE FOR		
TURX08	M8	101,450	Indextrut 41/41 - 41/21	100	400
TURX10	M10	115,903	Indextrut 41/41 - 41/21	100	400
TURX12	M12	128,530	Indextrut 41/41 - 41/21	50	300

NEW TU-RX A2

INDEXTRUT quick nut. Stainless steel A2



METAL



CODE	SIZE	€/100		
TURXA208	M8	151,443	50	300

TU-RXA

Indextrut Guide nut with fast-fixing washer



METAL



CODE	SIZE	€/100	SUITABLE FOR		
TURXA08	M8	244,850	41/21 - 41/41	50	50
TURXA10	M10	267,643	41/21 - 41/41	50	50

EG-X

Channel bracket Indextrut



METAL



CODE	SIZE	€/100	HOLE NUM	SUITABLE FOR		
EMX4502	86/52 x 40 x 5 45°	289,167	2	Indextrut 41/41 - 41/21	25	125
EMX9002	48 x 51 x 5 90°	188,893	2	Indextrut 41/41 - 41/21	50	150
EMX1302	71/48 x 40 x 5 135°	307,823	2	Indextrut 41/41 - 41/21	20	100
EMX9004	95 x 98 x 5 90°	298,497	4	Indextrut 41/41 - 41/21	25	75

SC-RX

Heavyduty angled bracket Indextrut



METAL



CODE	SIZE	€/100	SUITABLE FOR	
SCRX090	100 x 100 x 40	737,497	Indextrut 41/41 - 41/21	10

Indextrut Accessories for profiles

PX-AC

METAL



CODE	SUITABLE FOR	€/100	
EMPX4121	Indextrut 41/41 - 41/21	1.156,673	10

EMP-X

Indextrut Splice



METAL



CODE	SUITABLE FOR	€/100	
RTX01	41/41 - 41/21 - 41/62	886,247	10

RT-X

Indextrut Ball bushing support



METAL



CODE	HOLE NUM	€/100	SUITABLE FOR		
UNPX412101	1	78,317	41/41 - 41/21	50	300
UNPX412102	2	161,687	41/41 - 41/21	25	150
UNPX412103	3	227,370	41/41 - 41/21	25	125
UNPX412104	4	282,950	41/41 - 41/21	10	60

UN-PX

Indextrut Connector plate



METAL



CODE	HOLE NUM	€/100	SUITABLE FOR	
UNEX412103	3	411,773	41/41 - 41/21	25

UN-EX

Connector plate Indextrut Square



METAL



CODE	HOLE NUM	€/100	SUITABLE FOR	
UNTX412104	4	303,160	41/41 - 41/21 - 41/62	25

UN-TX

Connector plate "T" Indextrut



METAL



CODE	HOLE NUM	€/100	SUITABLE FOR		
PGX4121	3	380,193	Indextrut 41/21	15	90
PGX4141	5	503,910	Indextrut 41/41	10	60

PG-X

Channel U-fitting Indextrut



PX-AC

Indextrut Accessories for profiles

AB-GX

Perforated profile clamp Indextrut



METAL



CODE	€/100	SUITABLE FOR	
ABGX4121	589,183	Indextrut 41/41 - 41/21	20

SO-TP

Plastic caps



METAL



CODE	SIZE	€/100	SUITABLE FOR		
SOTP4121	41/21	50,470	41/21	100	600
SOTP4141	41/41	52,917	41/41	100	300

VE-AC

Accesorios de ventilación

UN-CO

Conduit union type "C"



METAL



CODE	SIZE	€/100		
UNCO3220	32 x 20	58,917	100	400

SO-PG

Isophonic rubber profile for support



METAL



CODE	SIZE	€/1PC	SUITABLE FOR	LENGTH	
SOPG27	27	138,805	27/18 - 28/30	20 m.	1
SOPG38	38	198,066	38/40 - 40/20	20 m.	1
SOPG41	41	202,631	41/21 - 41/41	20 m.	1

FOLLPYSEN22



Técnicas Expansivas S.L.

P. I. La Portalada II, C/ Segador, 13
26006 · Logroño (La Rioja) · SPAIN

T. (+34) 941.272.131 · E. info@indexfix.com
www.indexfix.com