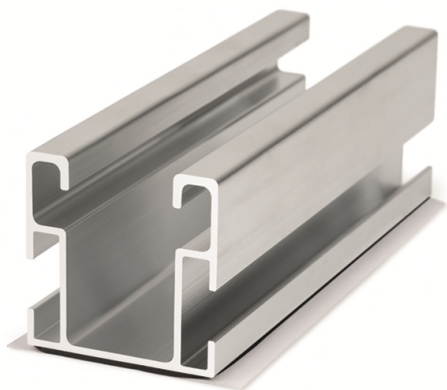


TECHNICAL DATASHEET:

Solar range / Profiles, joints, channels and connectors for supporting structure

PSE-CB



ASSESSMENTS



PRODUCT DESCRIPTION

- Aluminium profile for side mounting with butylene adhesive sealing tape

CHARACTERISTICS

- Profile for installation of solar panels on roofs.
- Extruded 6063-T6 aluminium alloy profile.
- For outside use.
- Designed for coplanar assembly systems.
- Assembled, detachable and reusable fixing.
- Profile height – 40 mm, with high bending resistance.
- General thickness – 1.5 mm.
- Central groove compatible with INDEXTRUT accessories.
- Includes butylene tape at the bottom to reduce operator assembly time.

APPLICATIONS/MOUNTING ACCESSORIES

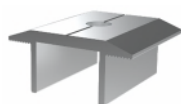


KFRSC3050 / KFRSCN3050

These are used in **coplanar aluminium installation systems** as structural elements onto which solar panels can be mounted and supported as continuous profiles.

In order to attach solar panels to the profile, one of the following assembly accessories should be used:

- KFRSC3050 / KFRSCN3050** “quick pre-assembled clamp”.
- Reference numbers:
 - One **PGSA26 / PGSN26** “simple clamp”.
 - One **TURXA208** “INDEXTRUT quick nut”.
 - One **6921I08070** DIN-6921 M8x70 all-thread bolt.



PGSA26 / PGSN26



TURXA208



6921I08070

FIXING SYSTEM/ASSEMBLY ACCESSORIES

Mounting with direct fixing/Application example 1

FIXING SYSTEM



TAC-N / TAC-B
Atlantis/Bimetal thin sheet screw



DIN-7504-K RE NI+ARVUL
Atlantis C4-M reduced point self-drilling screw

BASE MATERIAL/FIXING




See technical datasheet:

- Coplanar installation system with PSE-C aluminium profile. Assembled fixing (SC-PSI).

TECHNICAL DATASHEET:

Solar range / Profiles, joints, channels and connectors for supporting structure

1.RANGE

ITEM	CODE	PICTURE	DESCRIPTION	LENGTH	MATERIAL	
1	PSECB410125		Aluminium profile for side mounting with butylene adhesive sealing tape	125 mm	 Aluminium 6063-T6	 Butylene
	PSECB410200			200 mm		

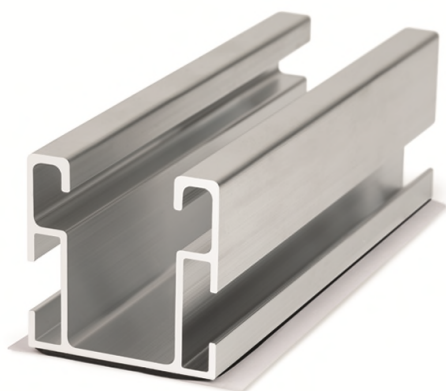
TECHNICAL DATASHEET:

Solar range / Profiles, joints, channels and connectors for supporting structure

2.INSTALLATION DATA

2.1 PSE-CB

Aluminium profile for side mounting with butylene adhesive sealing tape



BASE MATERIAL/FIXING

See technical data sheets:

- **SC-PSI:** Coplanar installation system on aluminium profile for assembled fixing

Material



Aluminium 6063-T6



Butylene

Assembly accessories



KFRSC3050 / KFRSCN3050
Quick pre-assembled clamp



PGSA26 / PGSN26
Simple clamp



TURXA208
INDETRUT quick nut



6921108070
A2-70 DIN-6921 stainless steel bolt

Fixing systems



TAC-N / TAC-B
Atlantis/Bimetal thin sheet screw

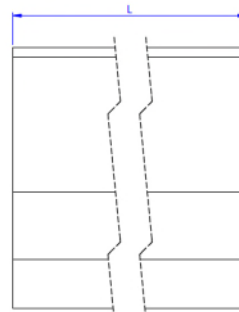
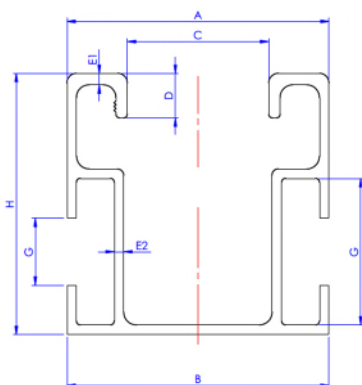


DIN-7504-K RE NI + ARVUL
Atlantis C4-M reduced point self-drilling screw

Installation data

Code	A (mm)	B (mm)	C (mm)	D (mm)	E1 (mm)	E2 (mm)	G (mm)	H (mm)	L (mm)
PSECB410125	41	41	22	7	1,8	1,5	23	41	125
PSECB410200	41	41	22	7	1,8	1,5	23	41	200

Drawing



Mechanical properties of the material

	Yield strength $F_{y0.2}$ (N/mm ²)	Ultimate load F_u (N/mm ²)	Elastic modulus E (N/mm ²)	Transverse elastic modulus G (N/mm ²)	Linear expansion coefficient α_L ($\mu\text{m}/\text{C}^\circ$)	Specific weight ρ (kg/m ³)
Aluminium EN AW-6063-T6	170	215	69.500	26.100	23,5	2.700

Mechanical properties of the profile.

	Area S (cm ²)	Moment of inertia I_x (cm ⁴)	Moment of inertia I_y (cm ⁴)	Section modulus W_x (cm ³)	Section modulus W_y (cm ³)	Linear weight W (kg/m)
 PSE-C	2,92	6,14	7,02	2,99	3,43	0,79