

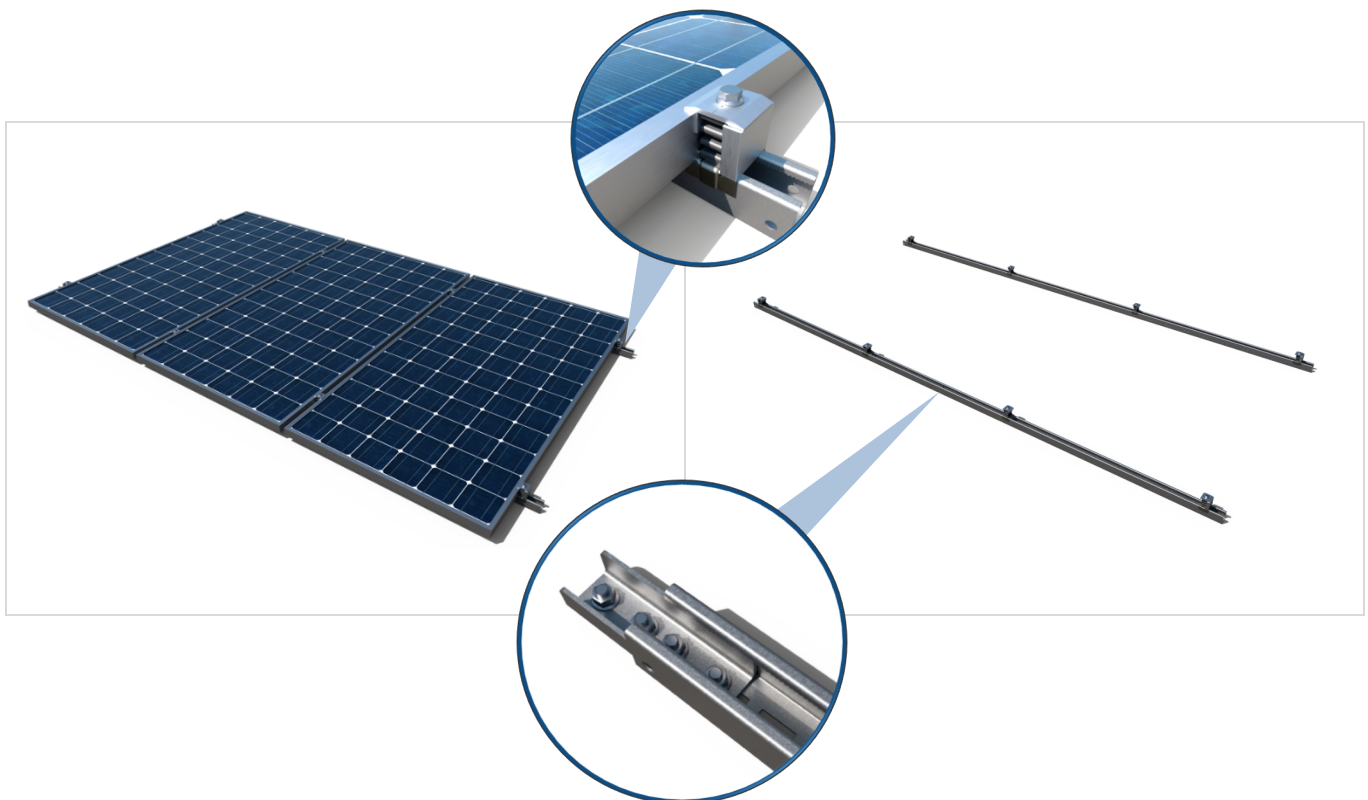
KC-GPX

PRODUCT DESCRIPTION

Coplanar kit with perforated steel channel Atlantis C4-M INDEXTRUT Solar GP-XS.

CHARACTERISTICS

- Assembly kit containing the components necessary for the installation of a determined number of solar panels.
 - Installation based on **SC-GPX** coplanar mounting system.
 - Includes quick fixing clamps **KFRSC3050** for panels.
 - Includes **GM-A** gauges for heights of 30, 35 and 40 mm.
 - Includes **GP- XS** perforated guide rail structure in continuous format.
- Includes **EMPXS4115** guide rail connector with A2 **DIN-6923** nuts and **DIN-6921** bolts for installation.



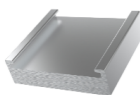
COMPONENTS

Quick pre-assembled clamp



KFR-SC

Aluminium gauge for solar frame



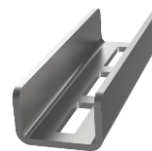
GM-A

INDEXTRUT solar perforated



GP-XS

INDEXTRUT solar connector



EMP-XS

A2 DIN-6923 bolt



D6923IM08

A2 DIN-603 bolt



D603I08020

APLICACIONES

- Assembly of solar panels in parallel with respect to the roof surface on sloping roofs.
- Installation on all roof types mounted on adjustable fixing accessories or directly mounted.
- For panels with a frame of 30 mm, 35 mm or 40 mm in height.
- For plate sizes up to 1150 mm wide.
- Portrait view (vertical) and landscape view (horizontal) orientation panel mounting with respect to the roof.
- Assembled or direct mounting fixing kit. Consult specifications in the **SC-GPX** mounting system technical data sheet.

1.RANGE

ITEM	CODE	PHOTO	DESCRIPTION	PANELS	FRAME	LENGTH ROW	MATERIALS			
1	KCGPX0230		Coplanar kit with steel perforated channel Atlantis C4-M INDEXTRUT Solar (GP-XS). For two panels	2	30 mm	2500 mm				
	KCGPX0235			2	35 mm	2500 mm				
	KCGPX0240			2	40 mm	2500 mm				
2	KCGPX0330		Coplanar kit with steel perforated channel Atlantis C4-M INDEXTRUT Solar (GP-XS). For three panels	3	30 mm	3750 mm				
	KCGPX0335			3	35 mm	3750 mm				
	KCGPX0340			3	40 mm	3750 mm				
3	KCGPX02AM		Coplanar enlargement kit with perforated guide for Steel Atlantis C4-M INDEXTRUT Solar (GP-XS). for 2 panels	2	--	2500 mm				
	KCGPX03AM		Coplanar enlargement kit with perforated guide for Steel Atlantis C4-M INDEXTRUT Solar (GP-XS). for 3 panels	3	--	3750 mm				

2.INSTALLATION DATA

2.1 KCGPX02

Coplanar kit with perforated steel channel Atlantis C4-M INDEXTRUT Solar GP-XS. For two panels

	<p>2 panels</p>	Component kit						
		<p>Quick pre-assembled clamp</p>	<p>Aluminium gauge for solar frame</p>	<p>INDEXTRUT solar perforated</p>	<p>INDEXTRUT solar connector</p>	<p>A2 DIN-603 bolt</p>	<p>A2 DIN-6923 bolt</p>	
		Reference						
		KCGPX0230 (H=30mm)	KFRSC3050 6 units	GMA030 4 units	GPXS4115125 4 units	EMPXS4115 2 units	D603I08016 8 units	D6923IM08 8 units
		KCGPX0235 (H=35mm)	KFRSC3050 6 units	GMA035 4 units	GPXS4115125 4 units	EMPXS4115 2 units	D603I08016 8 units	D6923IM08 8 units
KCGPX0240 (H=40mm)	KFRSC3050 6 units	GMA040 4 units	GPXS4115125 4 units	EMPXS4115 2 units	D603I08016 8 units	D6923IM08 8 units		

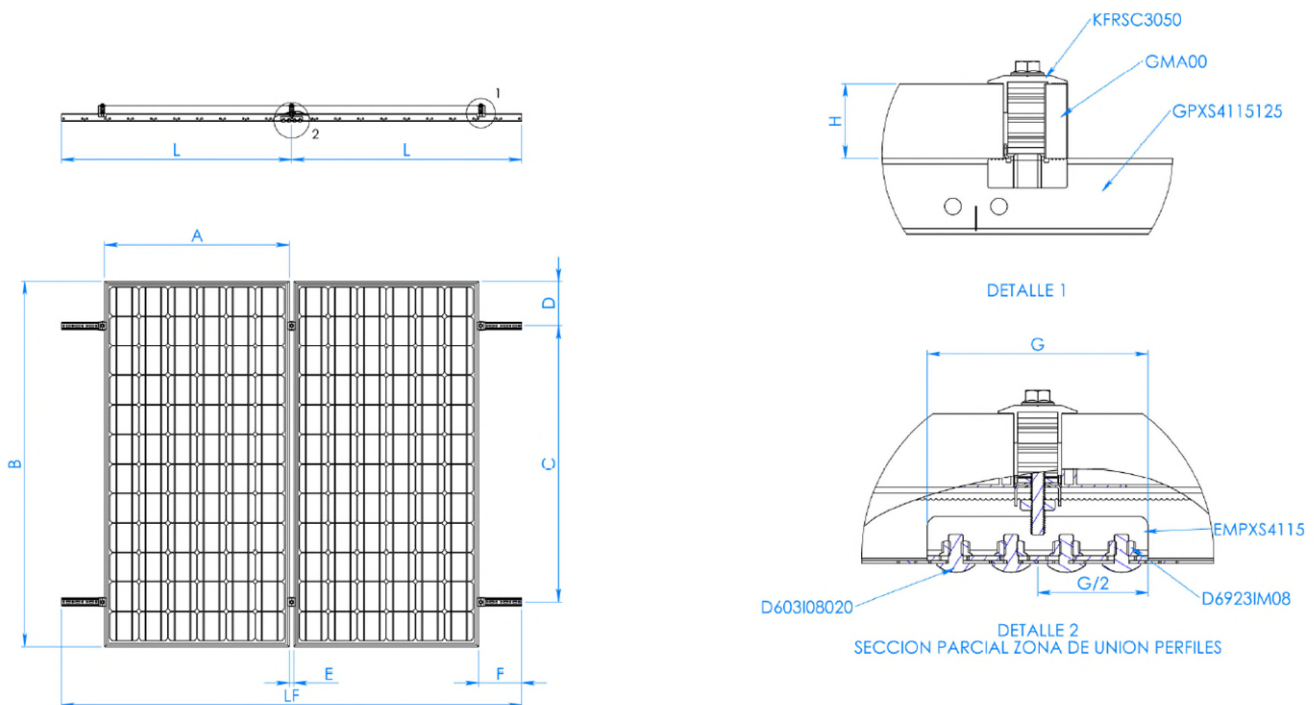
Roof/Fixing accessories

Consult technical data sheet corresponding to the SC-GPX assembly system.

Measurement table

Code	A (mm)	B (mm)	C (mm)	D (mm)	E (mm)	F (mm)	H (mm)	G (mm)	G/2 (mm)	L (mm)	LF (mm)
KCGPX0230	≤ 1150	≤ 2300	0,5B ÷ 0,7B	(B-C) / 2	26	≥ 35	30	120	60	1250	2500
KCGPX0235	≤ 1150	≤ 2300	0,5B ÷ 0,7B	(B-C) / 2	26	≥ 35	35	120	60	1250	2500
KCGPX0240	≤ 1150	≤ 2300	0,5B ÷ 0,7B	(B-C) / 2	26	≥ 35	40	120	60	1250	2500

Drawing



2.2 KCGPX03

Coplanar kit with perforated steel channel Atlantis C4-M INDEXTRUT Solar GP-XS. For three panels

	Component kit					
	 Quick pre-assembled clamp	 Aluminium gauge for solar frame	 INDEXTRUT solar perforated	 INDEXTRUT solar connector	 A2 DIN-603 bolt	 A2 DIN-6923 bolt
	3 panels					
	Reference					
KCGPX0330 (H=30mm)	KFRSC3050 8 units	GMA030 4 units	GPXS4115187 4 units	EMPXS4115 2 units	D603I08020 8 units	D6923IM08 8 units
KCGPX0335 (H=35mm)	KFRSC3050 8 units	GMA035 4 units	GPXS4115187 4 units	EMPXS4115 2 units	D603I08020 8 units	D6923IM08 8 units
KCGPX0340 (H=40mm)	KFRSC3050 8 units	GMA040 4 units	GPXS4115187 4 units	EMPXS4115 2 units	D603I08020 8 units	D6923IM08 8 units

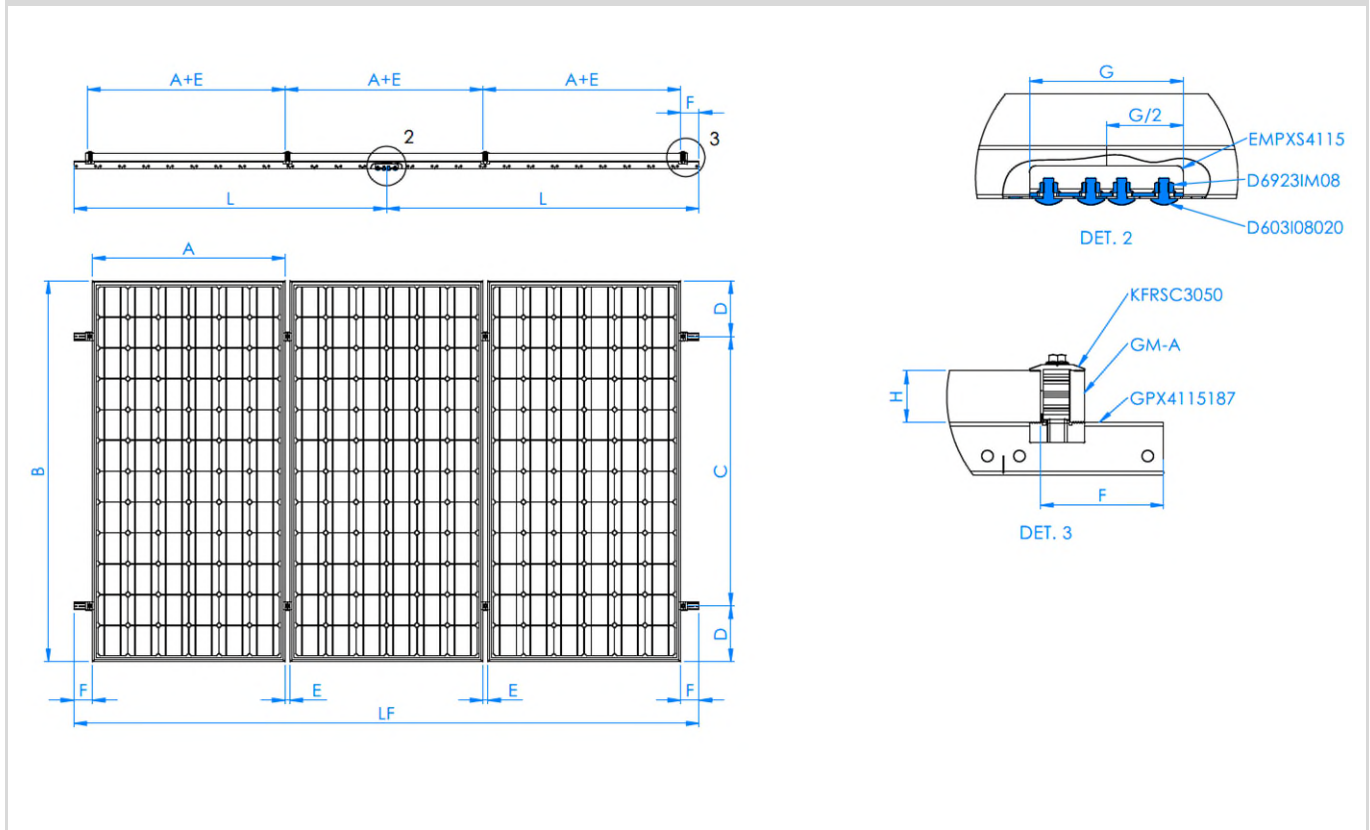
Roof/Fixing accessories

Consult technical data sheet corresponding to the SC-GPX assembly system.

Measurement table

Code	A (mm)	B (mm)	C (mm)	D (mm)	E (mm)	F (mm)	G (mm)	H (mm)	L (mm)	LF (mm)
KCGPX0330	≤ 1150	≤ 2300	0,5B ÷ 0,7B	(B-C) / 2	26	≥ 35	120	30	1875	3750
KCGPX0335	≤ 1150	≤ 2300	0,5B ÷ 0,7B	(B-C) / 2	26	≥ 35	120	35	1875	3750
KCGPX0340	≤ 1150	≤ 2300	0,5B ÷ 0,7B	(B-C) / 2	26	≥ 35	120	40	1875	3750

Drawing



2.3 KCGPXAM

Coplanar kit with perforated guide for Steel Atlantis C4-M INDEXTUT Solar (GP-XS). For enlargement 2 and 3 panels

	<p>2 & 3 panels</p> <p>Reference</p>	Component kit					
		<p>Quick pre-assembled clamp</p>	<p>INDEXTUT solar perforated</p>	<p>INDEXTUT solar connector</p>	<p>A2 DIN-603 bolt</p>	<p>A2 DIN-6923 bolt</p>	
		<p>KCGPX02AM</p>	<p>KFRSC3050 4 units</p>	<p>GPXS4115125 4 units</p>	<p>EMPXS4115 4 units</p>	<p>D603I08016 16 units</p>	<p>D6923IM08 16 units</p>
<p>KCGPX03AM</p>	<p>KFRSC3050 6 units</p>	<p>GPXS4115125 4 units</p>	<p>EMPXS4115 4 units</p>	<p>D603I08016 16 units</p>	<p>D6923IM08 16 units</p>		

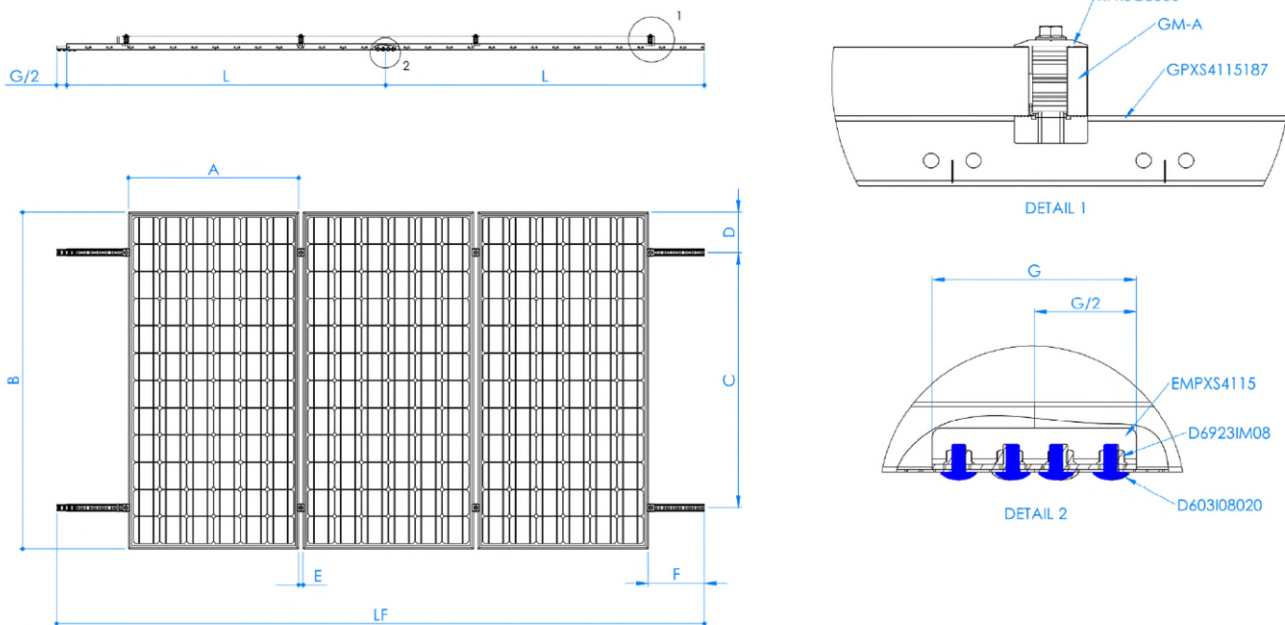
Roof/Fixing accessories

Consult technical data sheet corresponding to the SC-GPX assembly system.

Measurement table

Code	A (mm)	B (mm)	C (mm)	D (mm)	E (mm)	F (mm)	G (mm)	G/2 (mm)	L (mm)	LF (mm)
KCGPX02AM	≤ 1150	≤ 2300	0,5B ÷ 0,7B	(B-C) / 2	26	≥ 35	120	60	1250	2500
KCGPX03AM	≤ 1150	≤ 2300	0,5B ÷ 0,7B	(B-C) / 2	26	≥ 35	120	60	1875	3750

Drawing



Example of enlargement composition 3 panels