

KFS-RV



PRODUCT DESCRIPTION

- Threaded rod kit for chemical anchor installation. Stainless steel A2

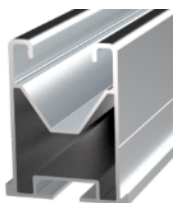
CHARACTERISTICS

- Includes one threaded rod kit for chemical anchors in A2-70 stainless steel.
- Includes three DIN-6923 knurled bolts in A2-70 stainless steel.
- Includes one EPDM ARS-S seal washer.
- For outside use.
- Hexagonal end for screwdriver installation.
- 90° tip for improved chemical anchor mix.
- Metric thread.
- Guarantees watertightness on roof through the ARS-S joint.
- Attach under roof to sub-structure with chemical anchors.
- Suitable for hollow materials using MO-TL mesh sleeves.

ASSESSMENTS



APPLICATIONS/MOUNTING ACCESSORIES



PSE-A

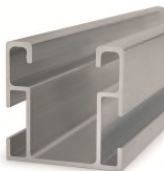


KFSFIM08



PMO1012

Used in **coplanar aluminium assembly systems** to attach solar panels to under-roof sub-structures. When assembling a **PSE-A** "aluminium profile for assembled fixing", a **PMO1012** "plate for double-threaded screw" and a **KFSFIM08** "cross connector for bottom fixing kit" are used on each double-threaded screw.



PSE-C



KFSFIM08



PMOL1012

Used in **coplanar aluminium lateral assembly systems** to attach solar panels to under-roof sub-structures. When assembling a **PSE-C** "aluminium profile for lateral assembled fixing", a **PMOL1012** "L mounting plate for double-threaded screw" and a **KFSFIM08** "cross connector for bottom fixing kit" are used on each double-threaded screw.



GP-XS



D603I08016



D6923IM08



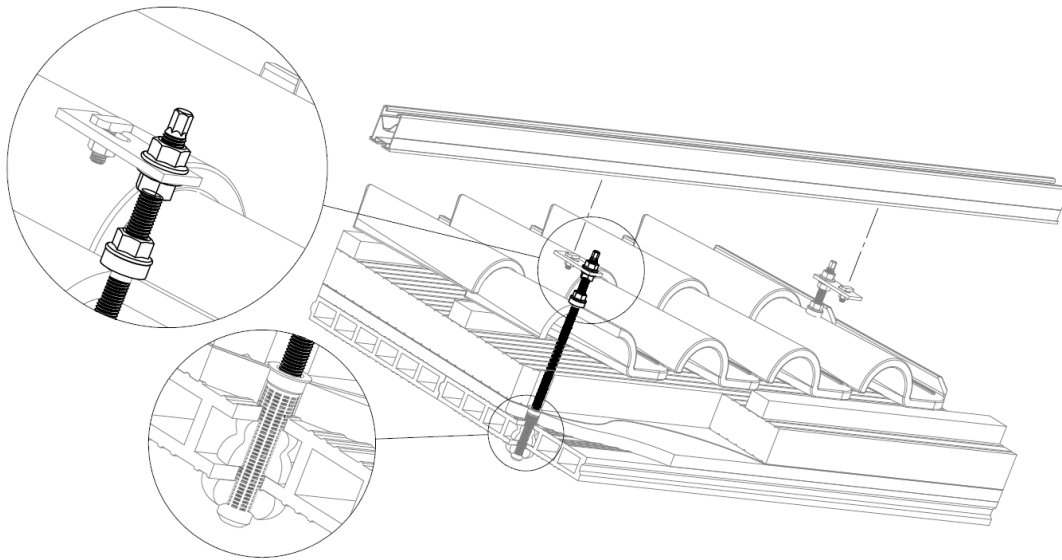
PMO1012

Used in **Atlantis steel coplanar systems** to attach solar panels to under-roof sub-structures. When mounting a **GP-XS** "INDEXTUT solar perforated guide", a **PMO1012** "plate for double-threaded screw", a **D603I08016** "16 mm DIN-603 M8 bolt" and a **D6923IM08** "DIN-6923 M8 nut", both in A2-70 stainless steel, are used on each double-threaded screw.

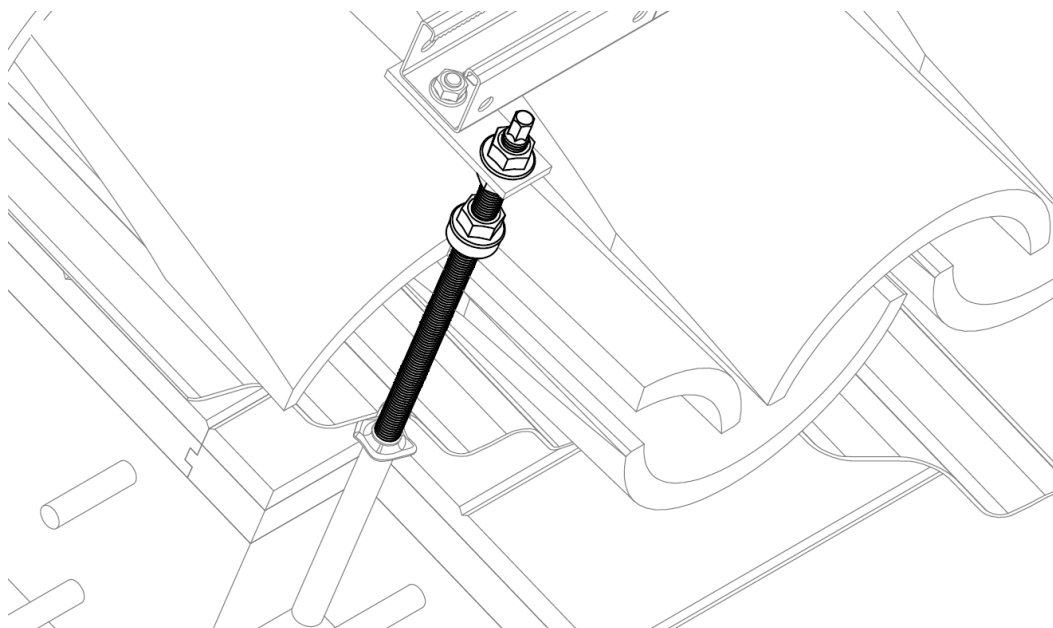
ROOF/SUB-STRUCTURE/FIXING ACCESSORIES

ROOF	 TILE	SUB-STRUCTURE BASE MATERIAL	 CONCRETE	FIXING ACCESSORIES	 Chemical anchor	 MO-TM Metal sleeve for chemical anchor
	 METAL SHEET		 HOLLOW CONCRETE			 MO-TN Sleeve for chemical anchor
	 SANDWICH PANEL		 HOLLOW BRICK			 MO-TL Sleeve for chemical anchor

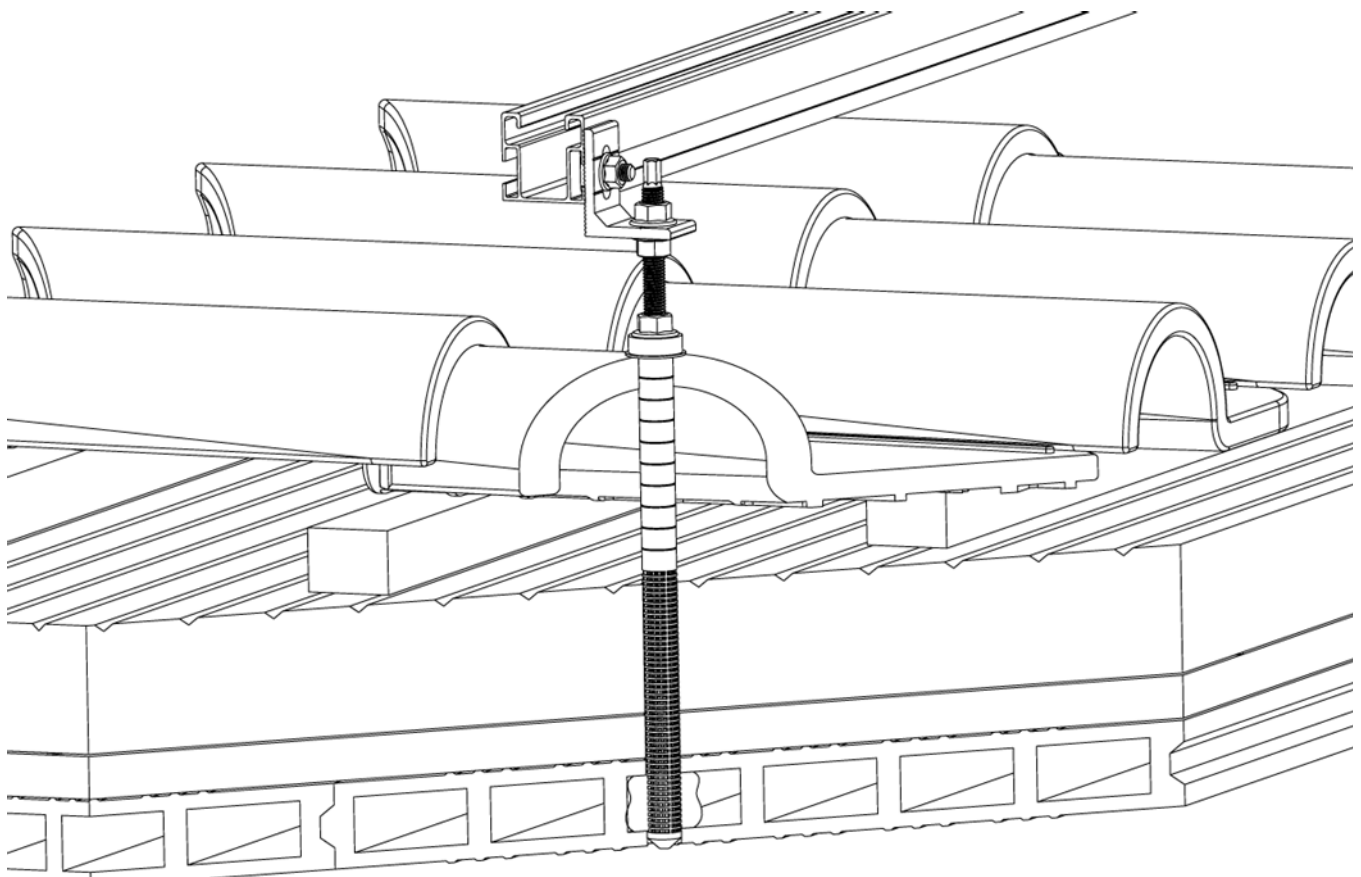
APPLICATION EXAMPLES



Application example 1: Mounting of the PSE-A profile on mixed roof tiles






Application example 2: Mounting of the GP-XS guide on curved roof tiles



Application example 3: Mounting of the PSE-C profile on curved roof tiles

1. RANGE

ITEM	CODE	FOTO	DESCRIPTION	METRIC	LENGTH	MATERIAL	
1	KFSRV10250		Threaded rod kit for chemical anchor installation. Stainless steel A2	M10	250 mm		
	M12			300 mm	AISI-304		

2. INSTALLATION INFORMATION

2.1 KFS-RV

Threaded rod kit for chemical anchor installation. Stainless steel A2



Material	Mounting accessories		Roof	
 AISI-304	 D603108016 + D6923IM08 DIN-603 M8x16 + DIN-6923 M8	 KFSFIM08 Cross connector for bottom fixing	 Tile	 Sandwich panel
 EPDM	 PMO Plate for double threaded screw	 PMO-L L Plate for double threaded screw	 Metal sheet	
Sub-structure base material			Fixing accessories	
 Concrete			 MO-TM Metal sleeve for chemical anchor	
 Hollow concrete	 Hollow brick	 Chemical anchor	 MO-TN Nylon sleeve for chemical anchor	
			 MO-TL Nylon sleeve for chemical anchor	

Measurement table

Code	M	L (mm)	SW (mm)	K (mm)	Washer EPDM
KFSRV10250	M10	250	7	12	ARSS10
KFSRV12350	M12	350	9	12	ARSS12

Drawing

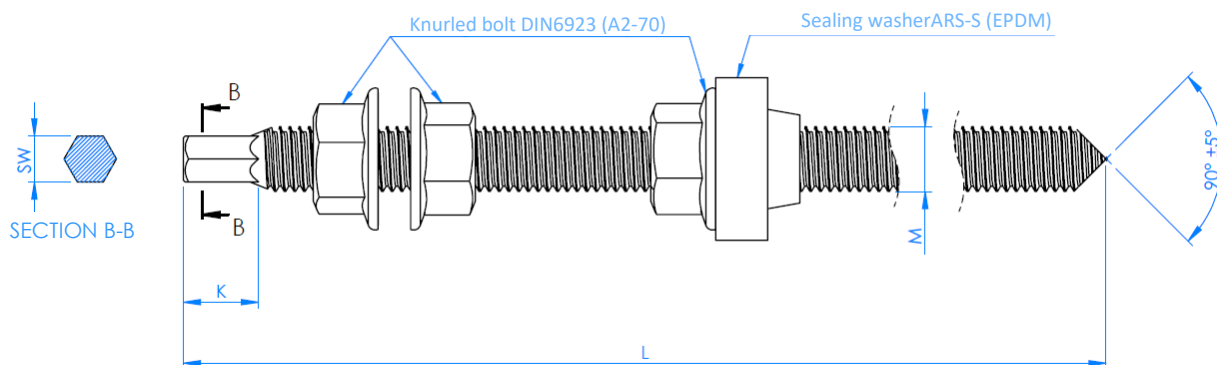


Table showing installation parameters

Chemical anchor parameters and installation process		See technical data sheets for the chemical anchors used			
		During the setting process for the chemical anchor, we recommend the use of a light rod pre-installed in the joint with the neck inserted into the opening of the roof to be sealed to ensure that the rod is correctly centred.			
Assembly of PMO plate		Installation of joint on roof			
Code	Metric/Wrench (M/Sw)	Maximum tightening torque (Nm)	Ø Roof drill hole (mm)	Metric/Wrench (M/Sw)	Maximum tightening torque (Nm)
KFSRV10250	M10/Sw15	28	16	M10/Sw15	Until adjustment of the joint (See Figures)
KFSRV12350	M12/Sw18	48	16	M12/Sw18	Until adjustment of the joint (See Figures)
