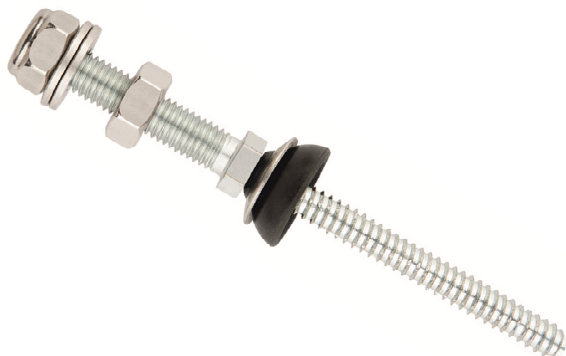


KFS-AU



PRODUCT DESCRIPTION

- Self-tapping screw kit. Stainless steel A2.

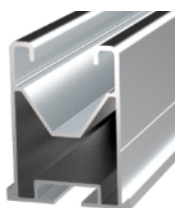
CHARACTERISTICS

- Includes one zinc-coated double-threaded screw for metal in A2-70 stainless steel.
- Includes one DIN-985 nut and one DIN-934 nut in A2-70 stainless steel.
- Includes two DIN-125 washers in A2-70 stainless steel.
- Includes one EPDM ARS-P umbrella washer in A2-70 stainless steel.
- For outside use
- Hexagonal end for screwdriver installation.
- Hexagonal centre for adjustment.
- BZ self-tapping tip.
- Guarantees watertightness on corrugated roofs through the ARS-P umbrella washer.
- Attach under roof to steel sub-structure.

ASSESSMENTS



APPLICATIONS/MOUNTING ACCESSORIES



PSE-A

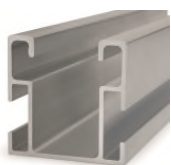


KFSFIM08



PMO1012

Used in **coplanar aluminium assembly systems** to attach solar panels to under-roof sub-structures. When assembling a **PSE-A** "aluminium profile for assembled fixing", a **PMO1012** "plate for double-threaded screw" and a **KFSFIM08** "cross connector for bottom fixing" are used on each double-threaded screw.



PSE-C



KFSFIM08



PMOL1012

Used in **coplanar aluminium lateral assembly systems** to attach solar panels to under-roof sub-structures. When assembling a **PSE-C** "aluminium profile for lateral assembled fixing", a **PMOL1012** "L mounting plate for double-threaded screw" and a **KFSFIM08** "cross connector for bottom fixing" are used on each double-threaded screw.



GP-XS



D603108016



D6923IM08



PMO1012

Used in **Atlantis steel coplanar systems** to attach solar panels to under-roof sub-structures. When mounting a **GP-XS** "INDETRUT solar perforated guide", a **PMO1012** "plate for double-threaded screw", a **D603108016** "16 mm DIN-603 M8 bolt" and a **D6923IM08** "DIN-6923 M8 nut", both in A2-70 stainless steel, are used on each double-threaded screw.

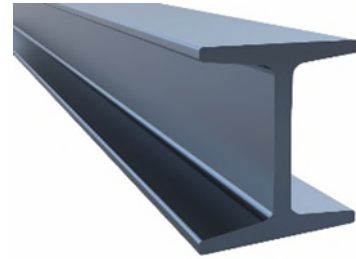
ROOF/SUB-STRUCTURE

ROOF



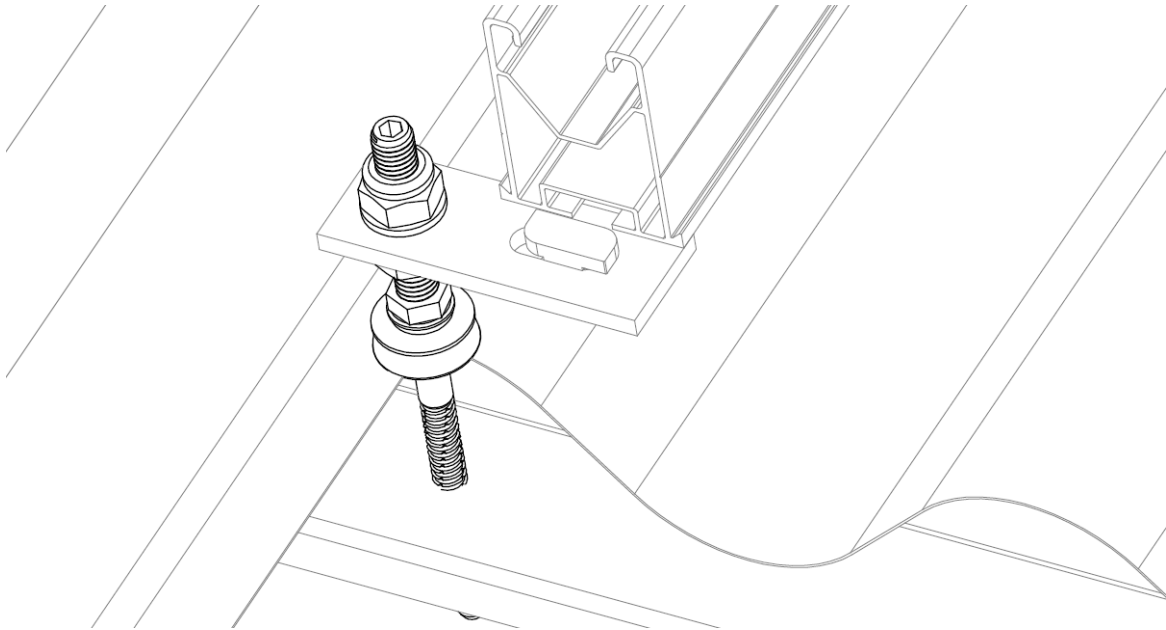
FIBRE CEMENT

SUB-STRUCTURE BASE MATERIAL

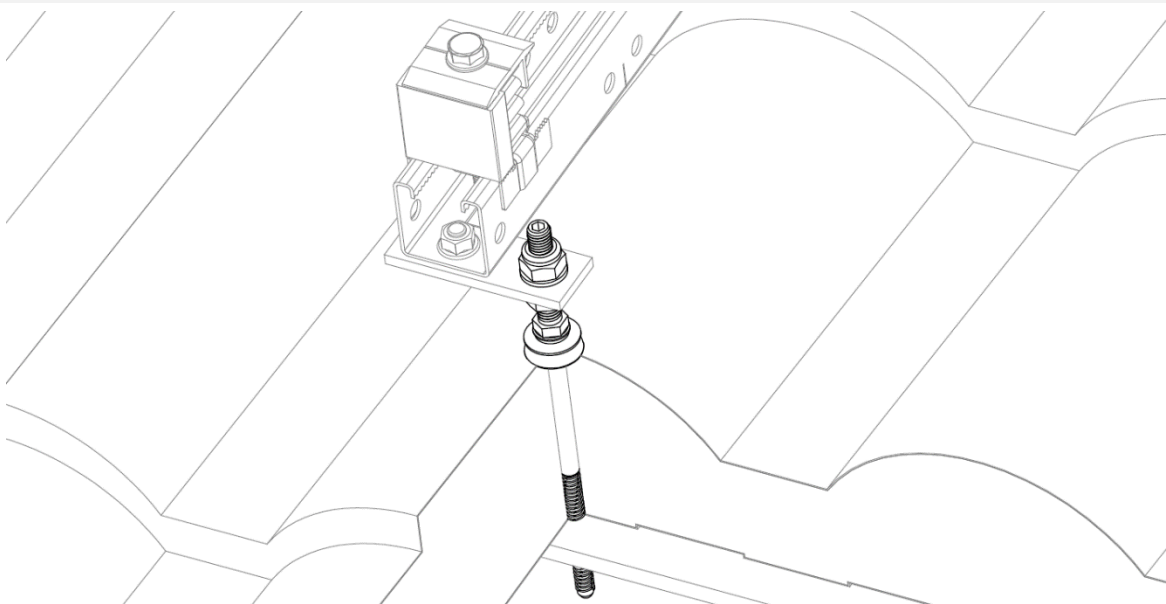


STEEL

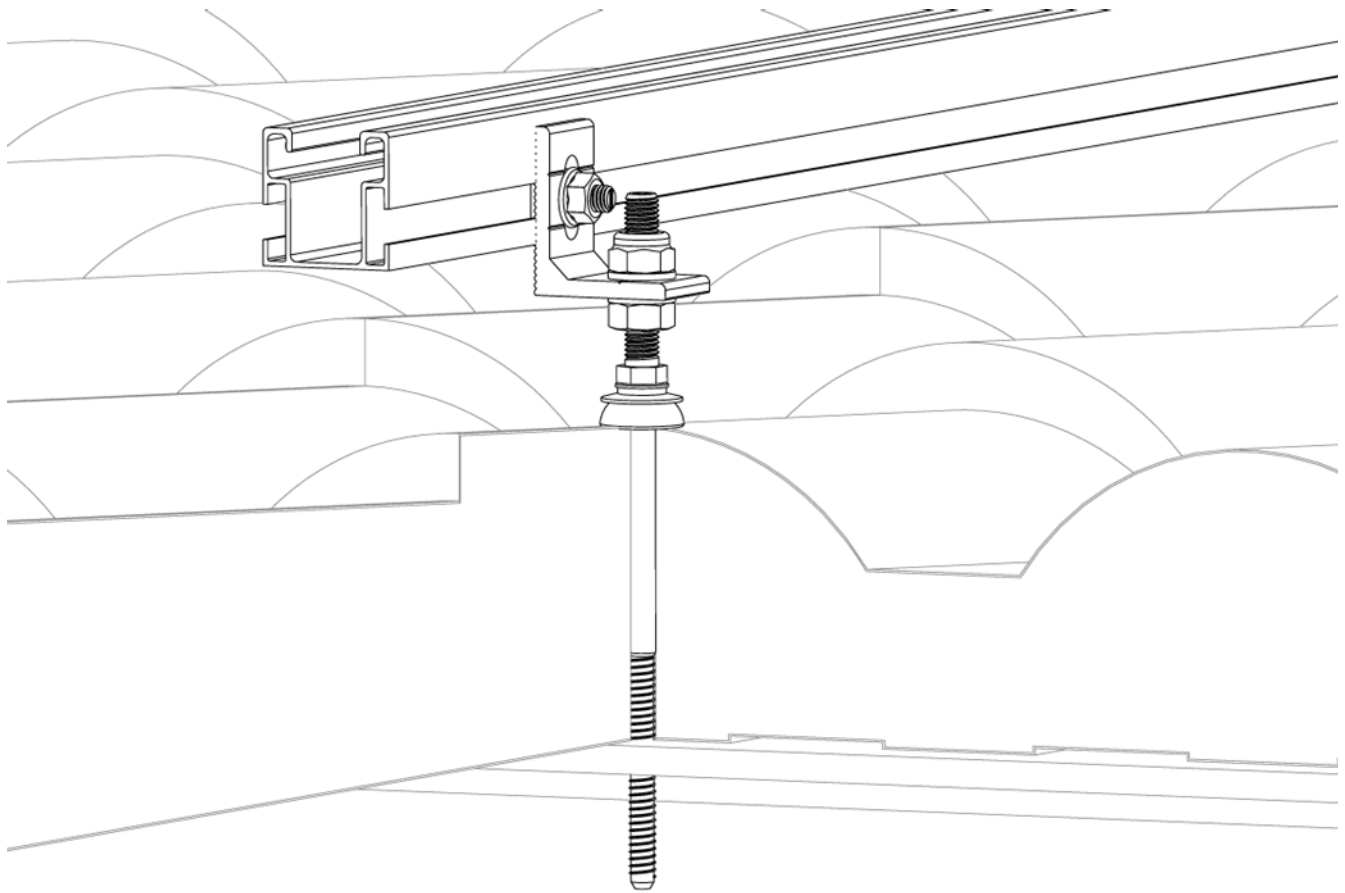
APPLICATION EXAMPLES



Application example 1: Mounting of the PSE-A profile on a corrugated fibre cement roof







Application example 2: Mounting of perforated GP-XS guide on imitation tile sandwich panel roofs



Application example 3: Mounting of the PSE-C profile on imitation tile sandwich panel roofs

1. RANGE

| ITEM | CODE | PHOTO | DESCRIPTION | METRIC | LENGTH | MATERIAL | FINISH | |
|------|------------|---|---|--------|--------|---|---|---|
| 1 | KFSAU10160 |  | Self-tapping screw kit. Stainless steel A2 | M10 | 160 mm |  AISI-304 |  EPDM |  ZINC |
| | 200 mm | | | | | | | |

2. INSTALLATION INFORMATION

2.1 KFS-AU

Self-tapping screw kit. Stainless steel A2



| Material | Finish | Assembly accessories | |
|-------------------------|-----------------|--|--|
| AISI-304 | Zinc | D603108016 + D69231M08 DIN-603 M8x16 + DIN-6923 M8 | KFSFIM08 Cross connector for bottom fixing |
| EPDM | | PMO Plate for double threaded screw | PMOL Plate in L for double threaded screw |
| Roof | | Sub-structure base material | |
| Fibre cement | | Steel | |

Measurement table

| Code | M | L (mm) | Lg (mm) | Lm (mm) | L1 (mm) | øD (mm) | S (mm) | SW (mm) | EPDM washer |
|------------|-----|--------|---------|---------|---------|---------|--------|---------|-------------|
| KFSAU10160 | M10 | 156 | 100 | 50 | 70 | 8 | 13 | 5 | ARSP08 |
| KFSAU10200 | M10 | 206 | 150 | 50 | 70 | 8 | 13 | 5 | ARSP08 |

Drawing

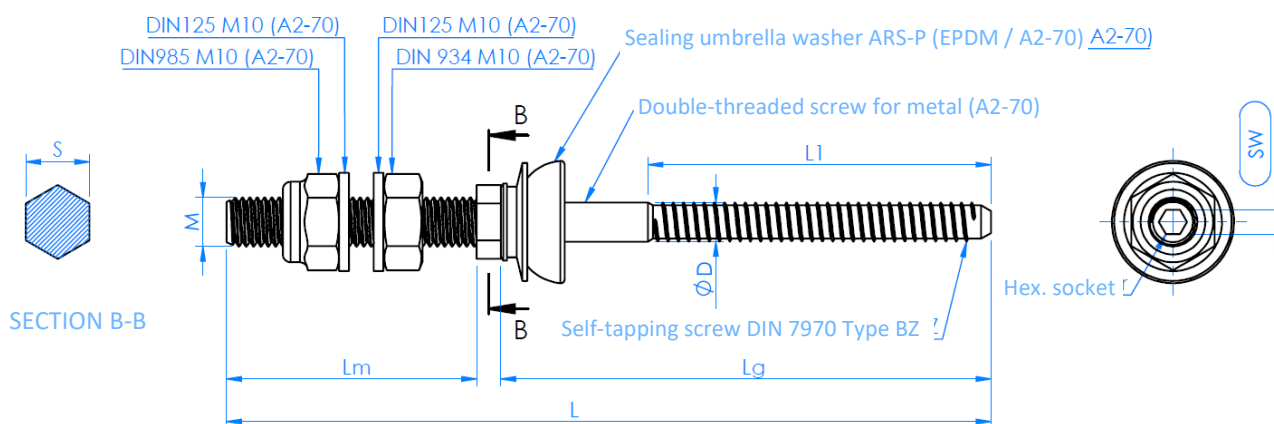
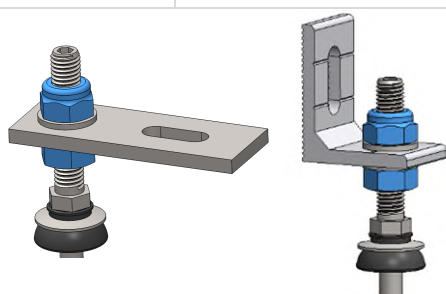
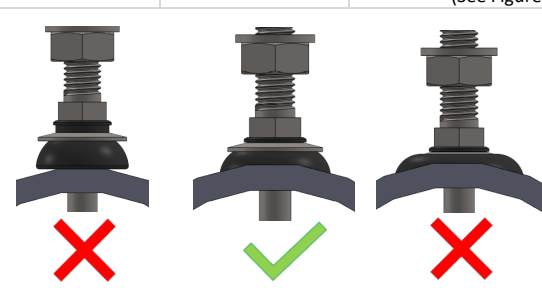


Table showing installation parameters

| Installation on base material | | | | | |
|--|-----------------------------------|---|---|---|--|
| Code | Interior installation wrench (mm) | Steel thickness: 1-5mm Ø drill hole (mm) | Steel thickness: 5-6mm Ø drill hole (mm) | Steel thickness: 6-8mm Ø drill hole (mm) | Steel thickness: ≥ 10mm Ø drill hole (mm) |
| KFSAU10160 | Sw5 | 6.8 mm | 7 mm | 7.2 mm | 7.4 mm |
| KFSAU10200 | Sw5 | 6.8 mm | 7 mm | 7.2 mm | 7.4 mm |
| Assembly of PMO and PMOL plate | | | Installation of joint on roof | | |
| Code | Metric/Wrench (M/Sw) | Maximum tightening torque (Nm) | Ø Roof drill hole (mm) | Metric/Wrench (M/Sw) | Maximum tightening torque (Nm) |
| KFSAU10160 | M10/Sw15 | 28 | 8-10 | M8/Sw13 | Until adjustment of the joint (See Figure) |
| KFSAU10200 | M10/Sw15 | 28 | 8-10 | M8/Sw13 | Until adjustment of the joint (See Figure) |
|  | | |  | | |

Extraction loads/Steel thickness (S280GD)

| Reference number | e = 1.5 mm NRd (kN) | e = 2 mm NRd (kN) | e = 3 mm NRd (kN) | e ≥ 4 mm NRd (kN) |
|------------------|------------------------|----------------------|----------------------|----------------------|
| KFSAU10160 | 1.47 | 2.27 | 3.87 | 4.53 |
| KFSAU10200 | 1.47 | 2.27 | 3.87 | 4.53 |