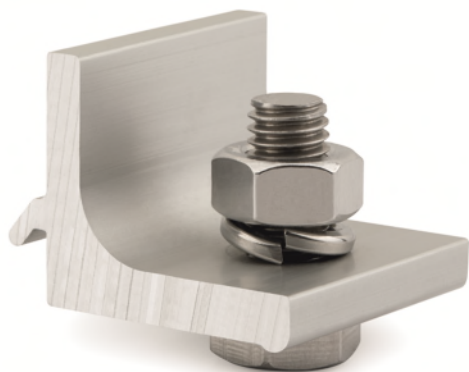


KFS-FC



PRODUCT DESCRIPTION

- Cross connector for lateral fixing.

CHARACTERISTICS

- Pre-assembled kit for lateral fixing of PSE-C profile.
- Includes one profile in 6005-T6 anodised extruded aluminium alloy.
- Includes one DIN-933 bolt, one DIN-127 (M8) washer and one DIN-934 (M8) nut in A2-70 stainless steel.
- For outside use.
- Attachment to the side of PSE-C profiles without interfering with any operations.
- 30 mm-long with a vertical 26.5 mm-wing, designed for a pre-stressed joint that is resistant to torsion on the profile.
- Quick, accessible fixing with a single bolt.
- Facilitates pre-assembly and the adjustment of profiles thanks to its elastic washer.
- Allows dismantling without damaging structural elements, maximum tightening torque: 14 Nm.
- Guide groove on the vertical wing that allows attachment drill holes to be made in the longitudinal joint areas between profiles.

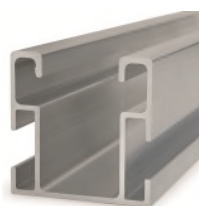
ASSESSMENTS



APPLICATIONS



TPA-R



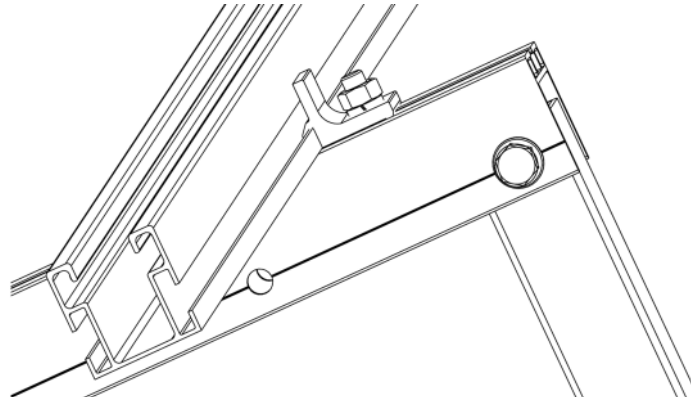
PSE-C

These are used in **assembled aluminium triangle fixing systems**, to complement the joint between the **TPA-R** “pre-assembled and adjustable aluminium triangle” and the **PSE-C** “aluminium profile for lateral assembled fixing” as a cross-connector between the two.

The specific design allows a connection between the side walls of the **PSE-C** profile, producing a strong pre-stressed joint without interfering with any profile operations.





Attachment is via a single M8 **DIN-933** bolt (included in the kit) which is introduced into the upper groove of the **TPA-R** triangle.

APPLICATION EXAMPLE



Application example: mounting on adjustable aluminium triangle.

1. RANGE

| ITEM | CODE | PHOTO | DESCRIPTION | LENGTH | MATERIAL | FINISH |
|------|----------|--|------------------------------------|--------|---|--|
| 1 | KFSFCM08 |  | Cross connector for lateral fixing | 30 mm |  6005-T6 aluminium |  Anodised |
| | | | | |  A2-70 | |

2. INSTALLATION INFORMATION

2.1 KFS-FC

Cross connector for lateral fixing

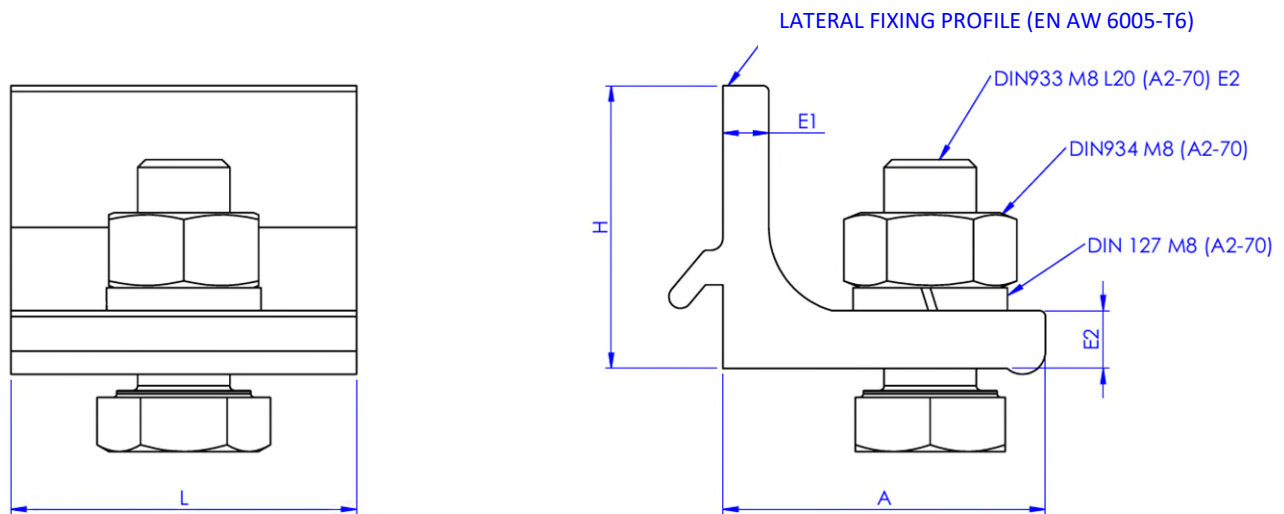


| Material | Finish | Compatible with | |
|-----------------------|--------------|---|--|
| 6005-T6 aluminium | Anodised | PSE-C Aluminium profile for lateral assembled fixing | TPA-R Pre-assembled and adjustable aluminium triangle |
| A2-70 AISI 304 | | | |

Measurement table

| Code | A (mm) | H (mm) | E1 (mm) | E2 (mm) | L (mm) |
|----------|--------|--------|---------|---------|--------|
| KFSFCM08 | 28 | 24,5 | 4 | 5 | 30 |

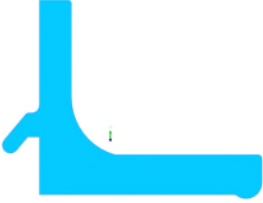
Drawing



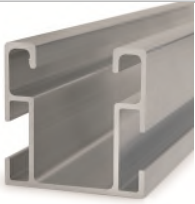

Mechanical properties of the materials

| | Yield strength $F_{y0.2}$ (N/mm ²) | Ultimate load F_u (N/mm ²) | Elastic modulus E (N/mm ²) | Transverse elastic modulus G (N/mm ²) | Linear expansion coefficient α_L ($\mu\text{m}/^\circ\text{C}$) | Specific weight ρ (kg/m ³) |
|-------------------------|--|--|--|---|--|---|
| EN AW-6005-T6 aluminium | 225 | 270 | 69,500 | 26,200 | 23.3 | 2,710 |
| A2-70 stainless steel | 450 | 700 | 193,000 | 78,000 | 17.3 | 7,930 |

Mechanical properties of the profile.

| | Area S (cm ²) | Moment of inertia I _x (cm ⁴) | Moment of inertia I _y (cm ⁴) | Linear weight W (kg/m) |
|---|---------------------------------|---|---|------------------------------|
|  KFS-FC/Profile | 2,41 | 0,58 | 2,30 | 0,625 |

Installation properties

| Profile | Installation system | Bolt metric | Maximum installation tightening torque (Nm) | Installation wrench (mm) | Design load N_{Rd} (kN) |
|--|--|-------------|---|-----------------------------|---|
|  PSE-C |  TPA-R | M8 | 14 | SW13 | 1.45 |

We recommend that two **KFSFCM08** units are used to attach each **PSE-C** profile in each joint area.