

CL-EX

PRODUCT DESCRIPTION



Clip clamp extraction tool

CHARACTERISTICS

- Removal tool of the clamps fixing the solar panels by clipping.
- Allow a comfortable extraction of the photovoltaic modules for maintenance.
- For outside use.

APPLICATIONS / COMPATIBLE WITH



It is used to remove the clamp from the profile to which it is attached. This extraction allows the maintenance of the solar panel to be carried out.

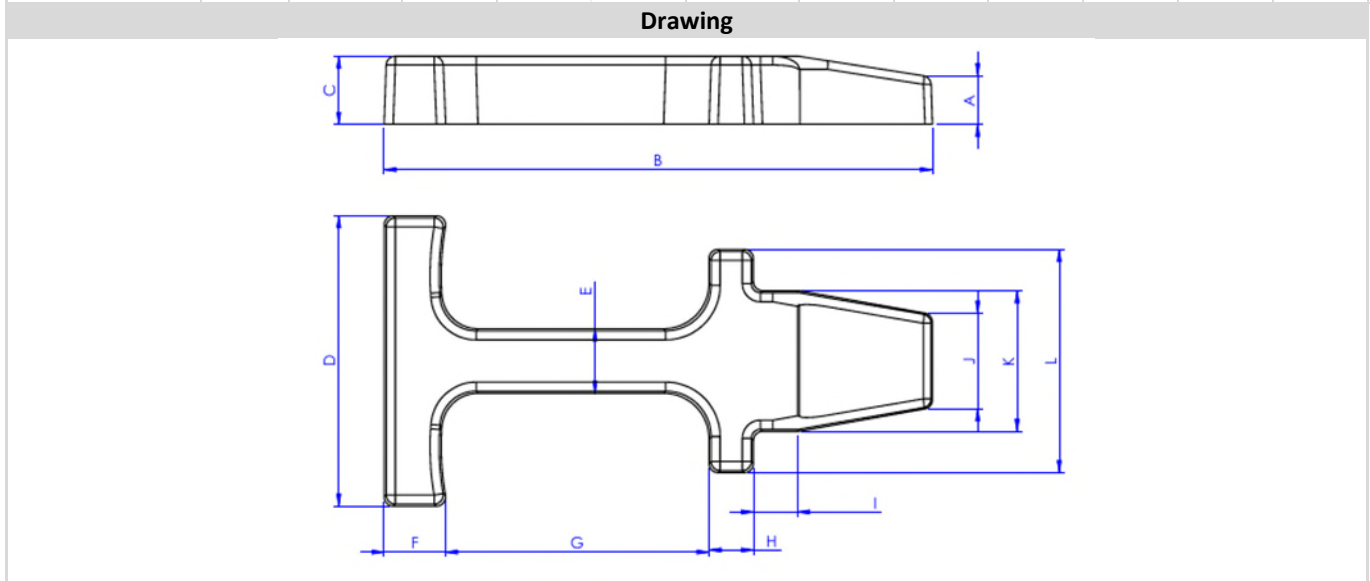
1. RANGE

ITEM	CODE	PHOTO	DESCRIPTION	MATERIAL
1	CLEX01		Clip clamps extraction tool	<p>POLIPROPILENO POLYPROPYLENE</p> <p>Polypropylene</p>

2. INSTALLATION INFORMATION

2.1 CL-EX		Clip clamp extraction tool	
		Material	Compatible with
		<p>POLIPROPILENO POLYPROPYLENE</p> <p>Polypropylene</p>	<p>Clip clamp CL-GS</p>

Measurement table												
Code	A (mm)	B (mm)	C (mm)	D (mm)	E (mm)	F (mm)	G (mm)	H (mm)	I (mm)	J (mm)	K (mm)	L (mm)
CLEX01	10,7	123	15	65	15	13,5	58	9,8	10	21	32	50



Process of using the disassembly tool		
Steps	Representative photo	Description
Step 1 Insert the tool in the profile		Insert the tool inside the profile near the clamp to be removed.
Step 2 Apply pressure perpendicular to the profile		Use force to open the profile and allow the clamp to spring out of position.
Step 3 Remove the clamp when it springs out		Remove the clamp and proceed in the same way for the rest of the clamps.